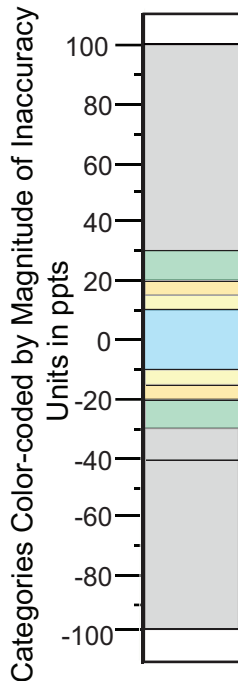
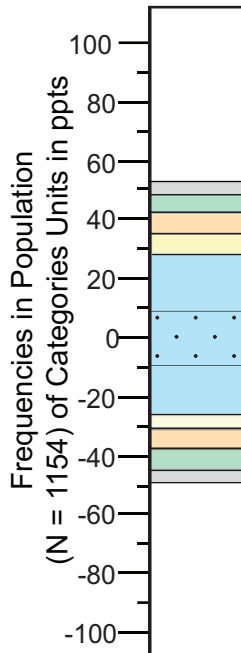


Self-Assessment Skill Category	Category Definition by Magnitude
Skilled	
<b>Good</b>	Inaccuracy $\leq 10$ ppts
<b>Adequate</b>	$10 < \text{Inaccuracy} \leq 15$ ppts
<b>Marginal</b>	$15 < \text{Inaccuracy} \leq 20$ ppts
Unskilled	
<b>Inadequate</b>	$20 < \text{Inaccuracy} \leq 30$ ppts
<b>Extreme</b>	Inaccuracy $> 30$ ppts



A



Occurrence by Frequency in Study Populace (N=1154)		
Categories of Self-Assessment Skill by Decreasing Skill (Color-Coded)		Frequency
Individuals within $\pm 10$ ppts are not classified as underconfident or overconfident		48.5%
Individuals within $\pm 15$ ppts are still not classified as underconfident or overconfident		17.7%
5.4% underconfident	5.1% overconfident	10.5%
Unskilled and Underconfident	Unskilled and Overconfident	
Inadequate but not extreme = 4.8%	Inadequate but not extreme = 7.7%	12.5%
Extremely under 5.5%	Extremely over 5.3%	10.8%
Sum = 10.3%	Sum = 13%	Total = 100%

B