

# Evidence for Extensive Mud Diapirism in Northern Kumano Basin, Nankai Trough

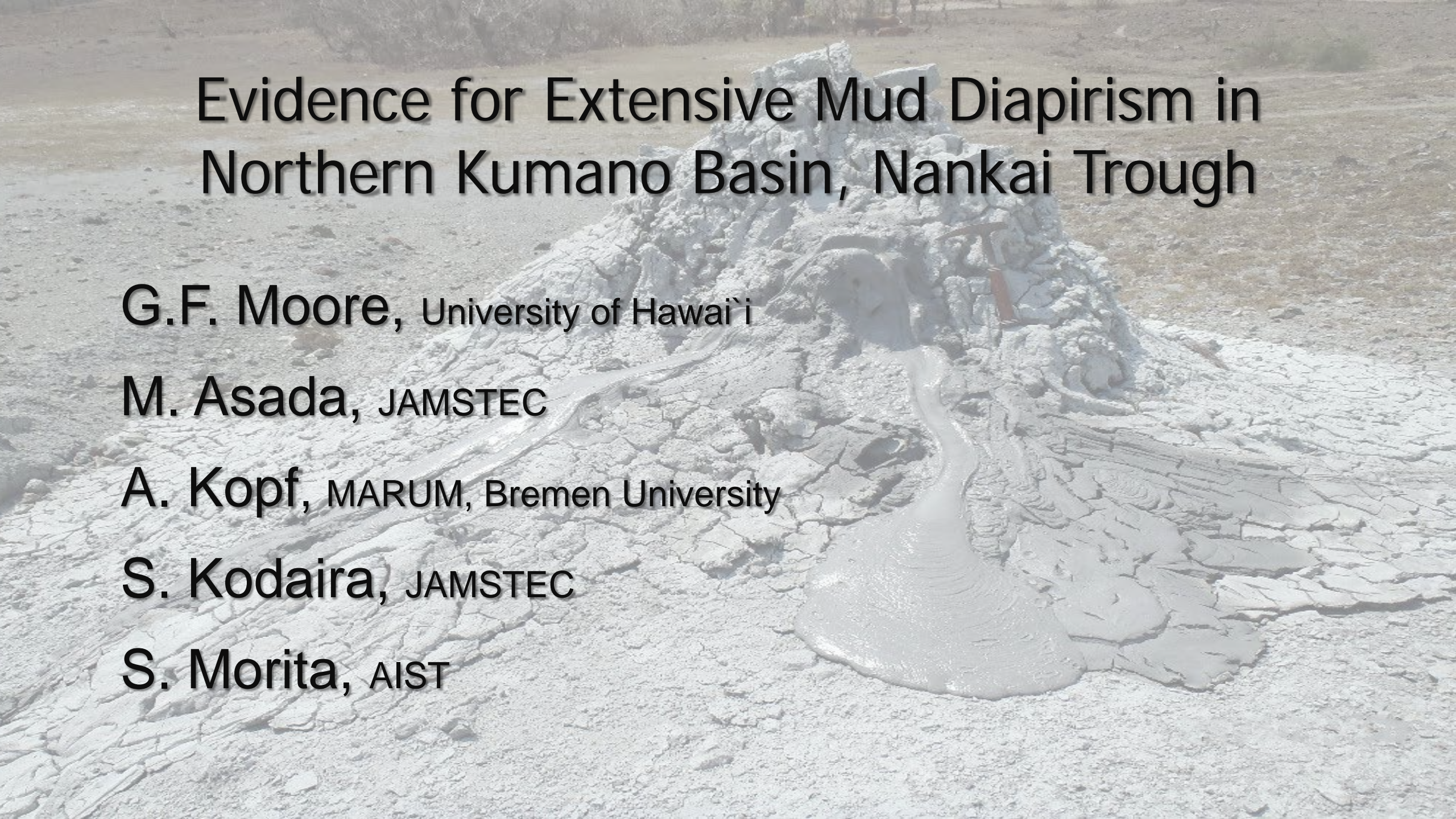
G.F. Moore, University of Hawai'i

M. Asada, JAMSTEC

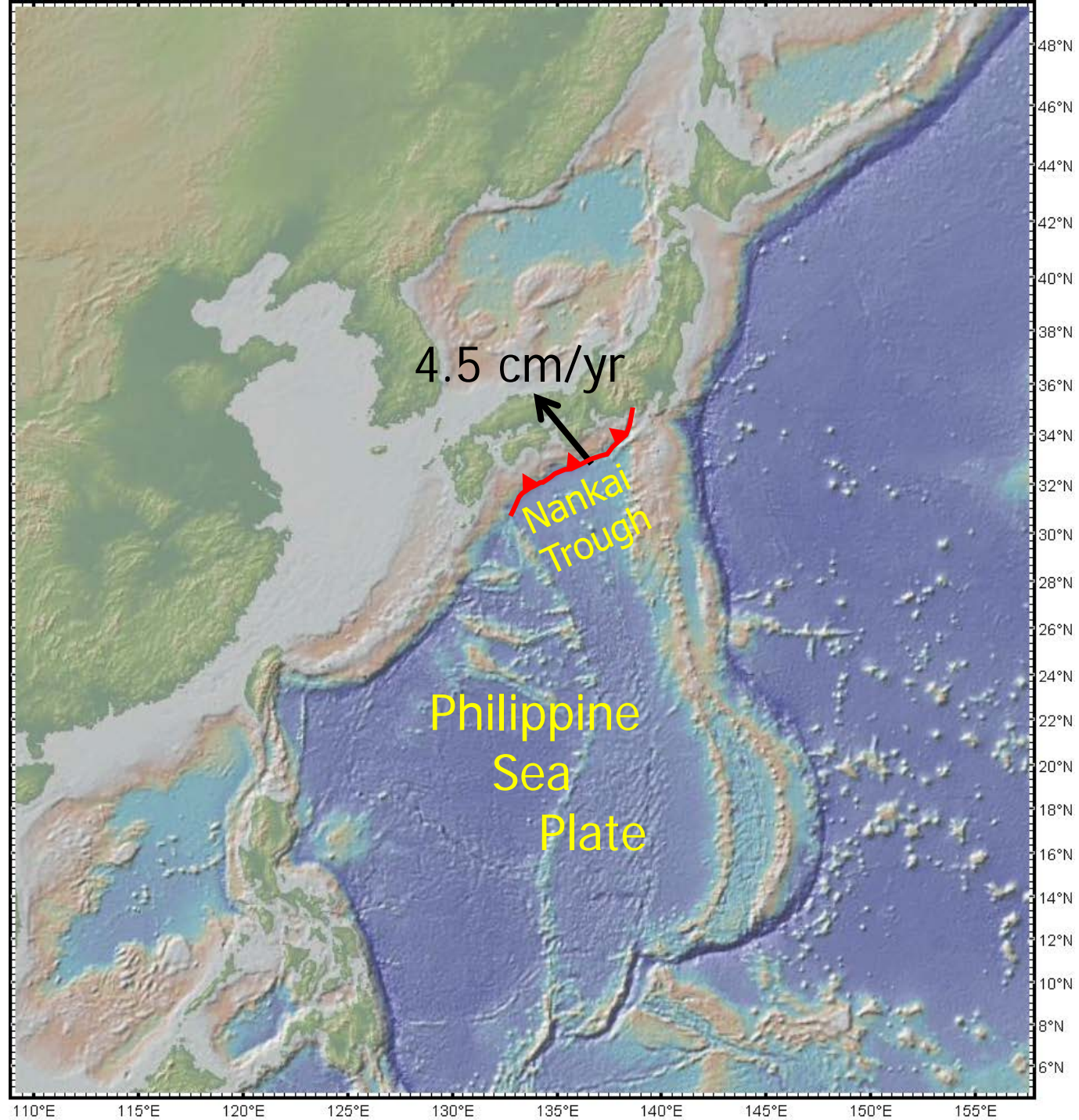
A. Kopf, MARUM, Bremen University

S. Kodaira, JAMSTEC

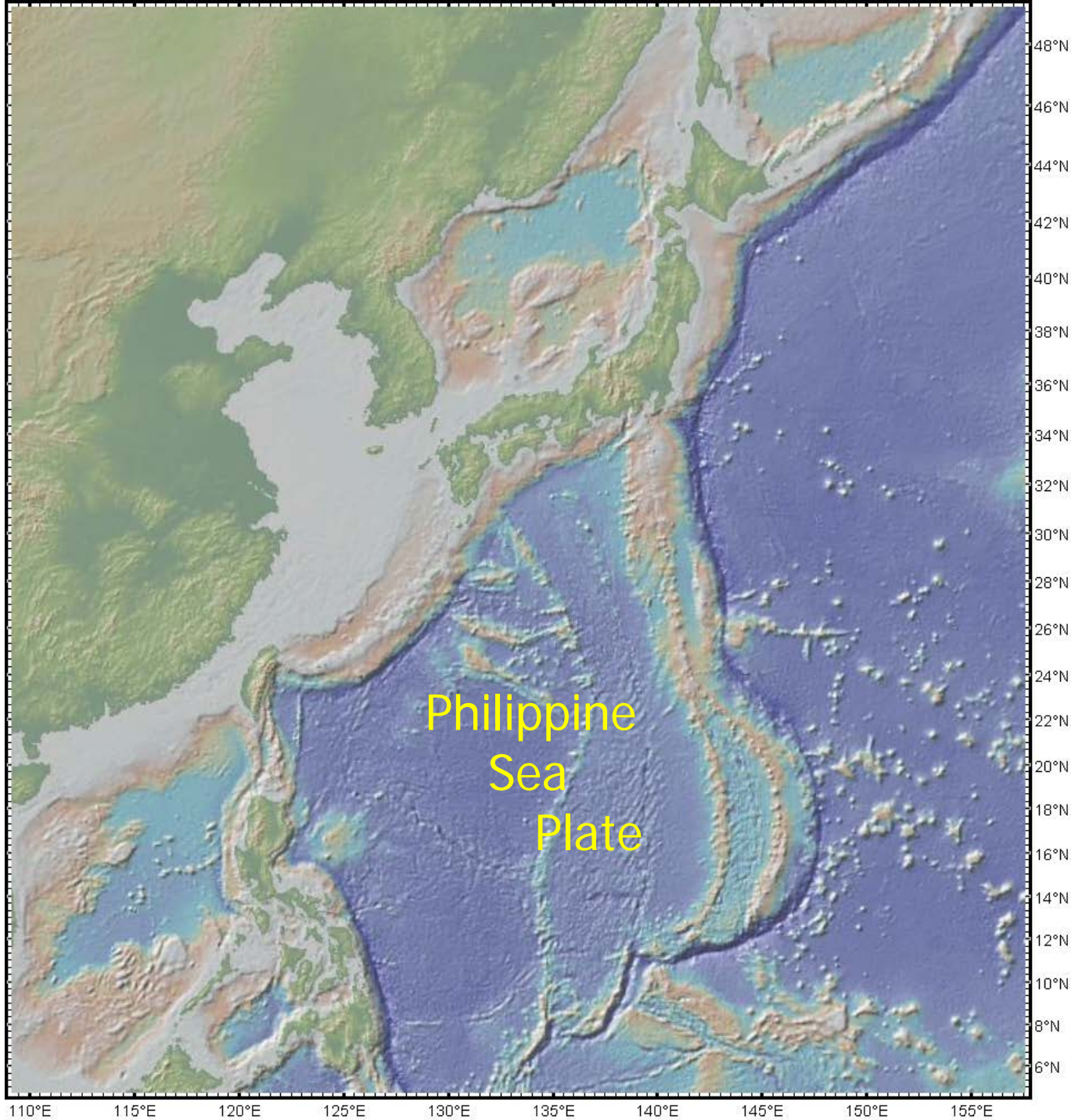
S. Morita, AIST



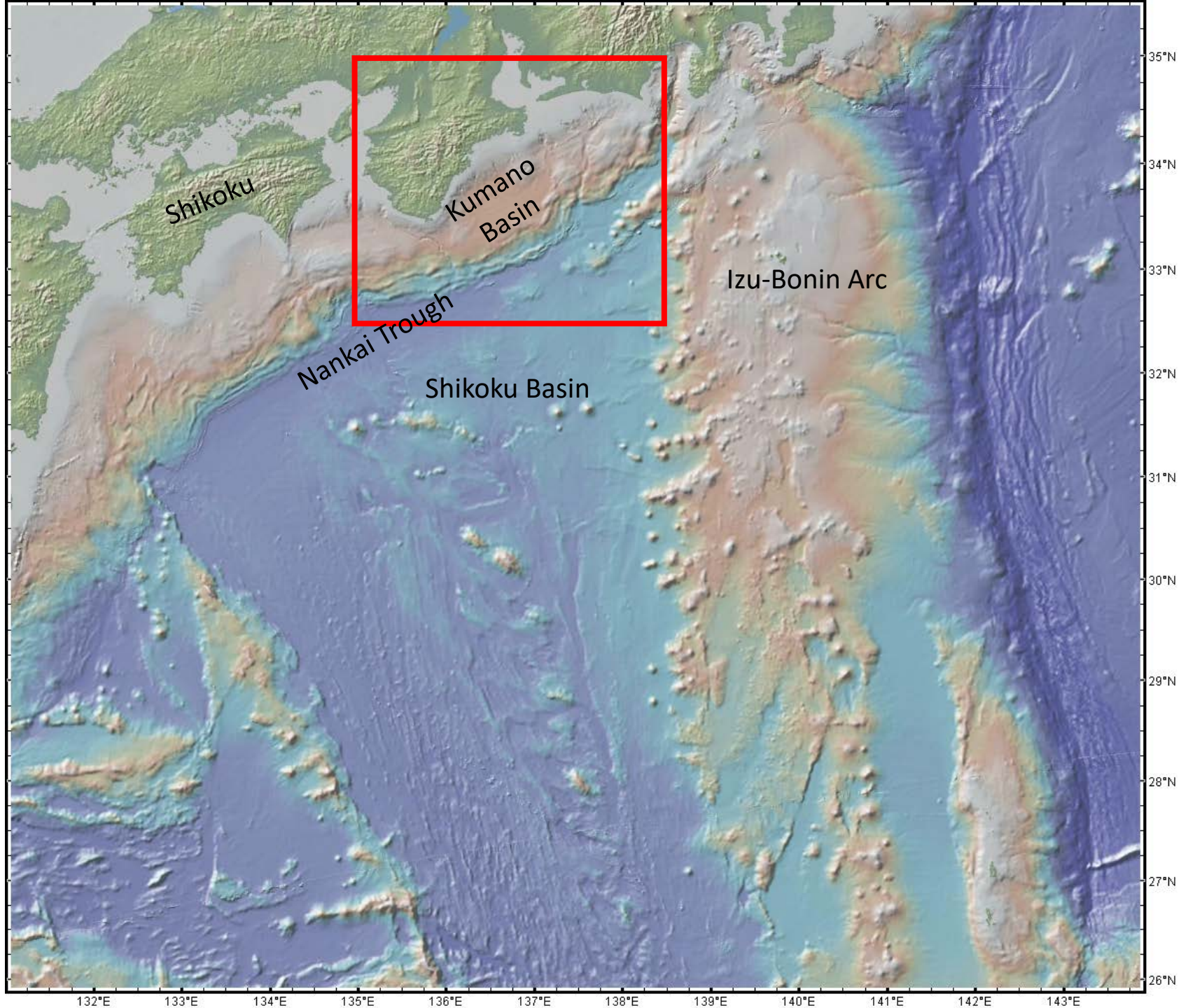




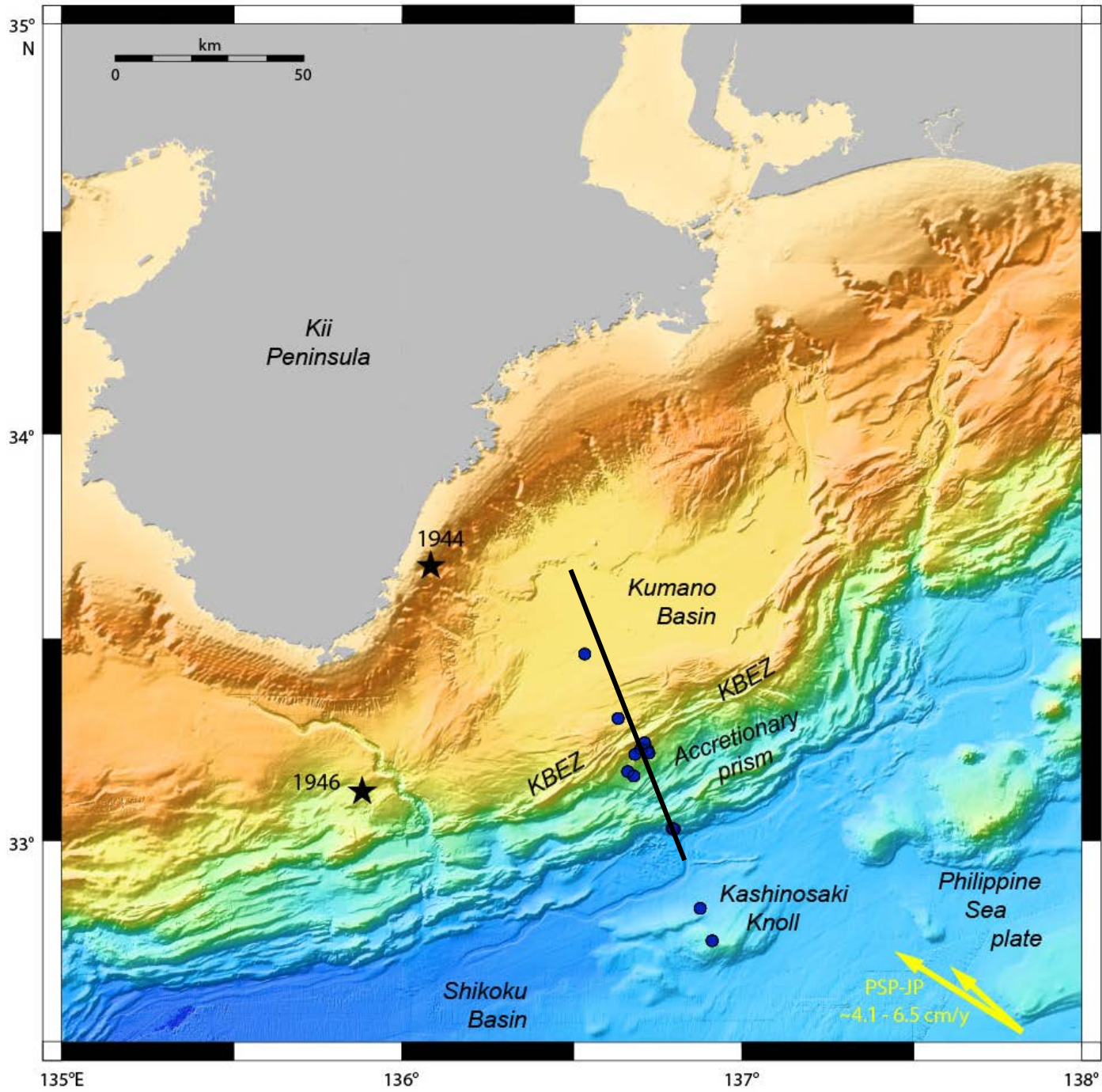




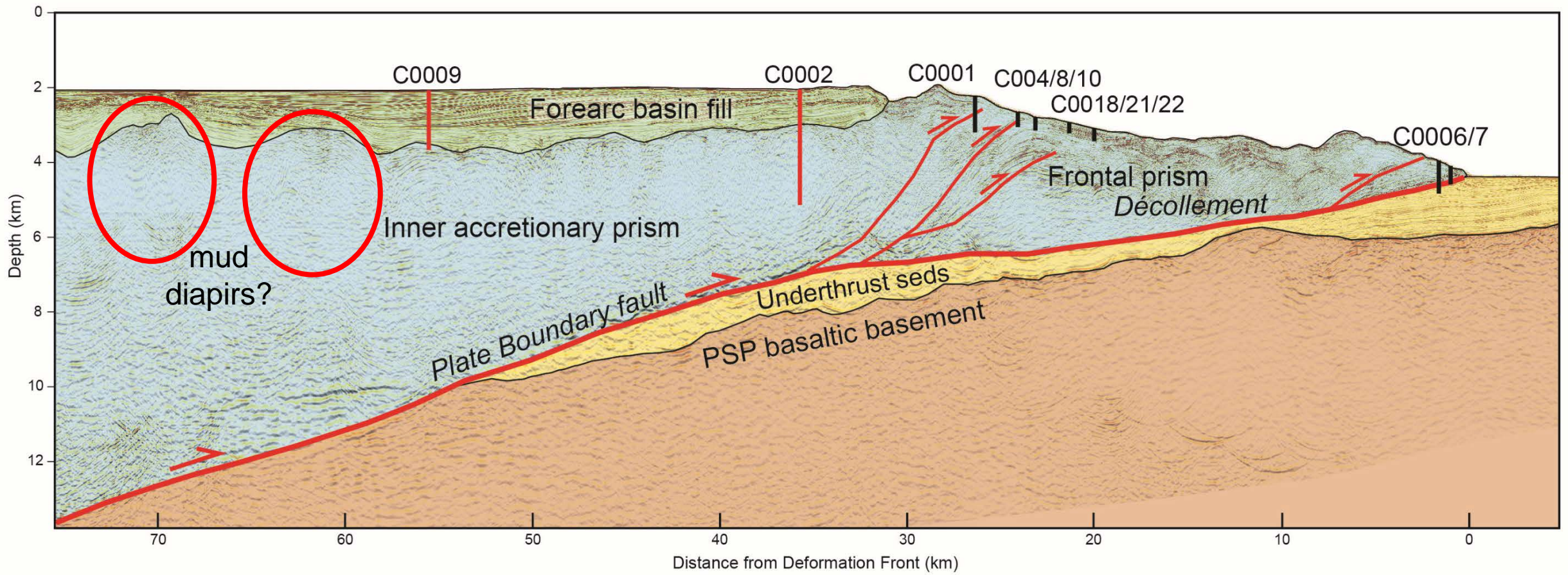




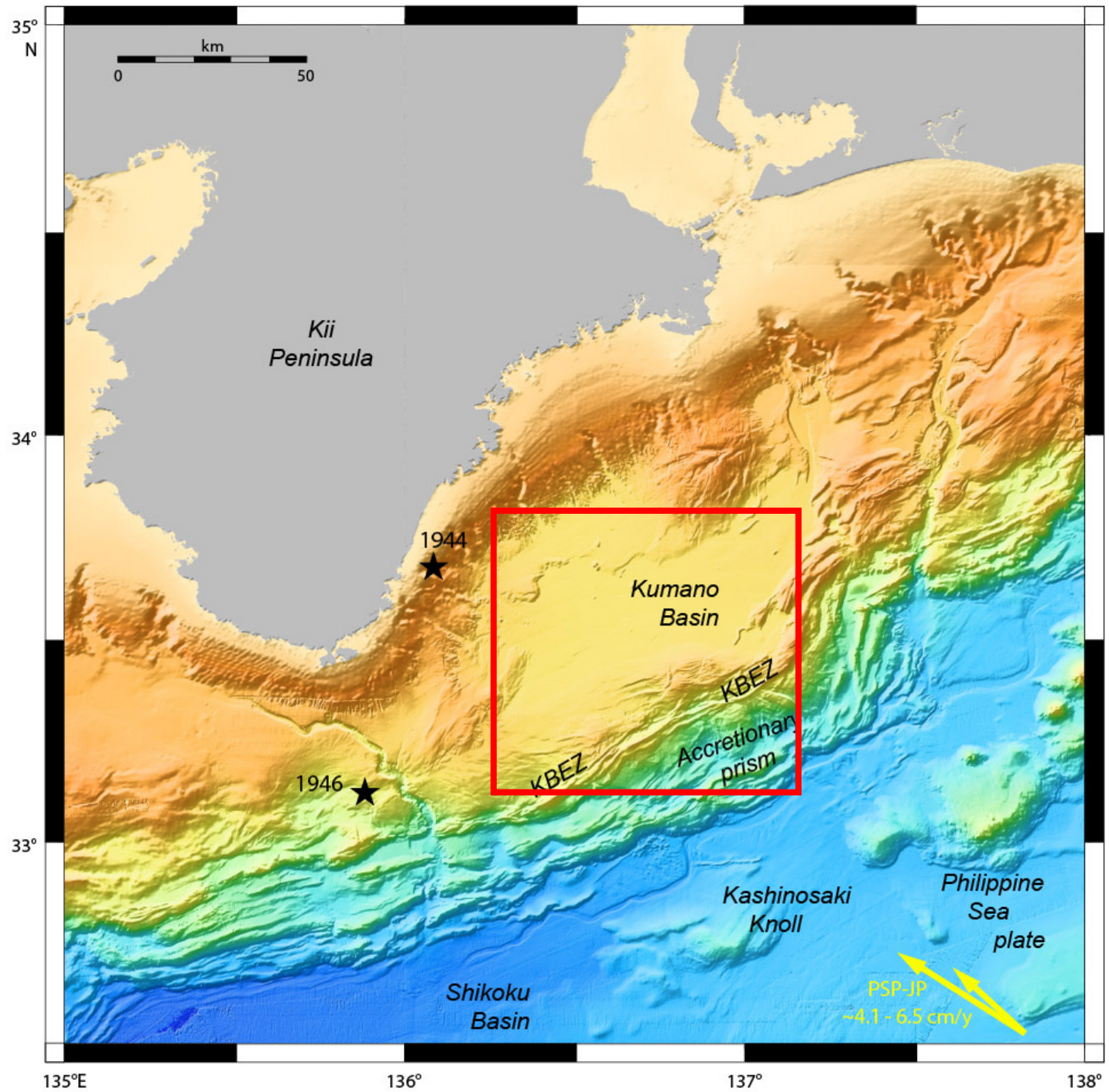






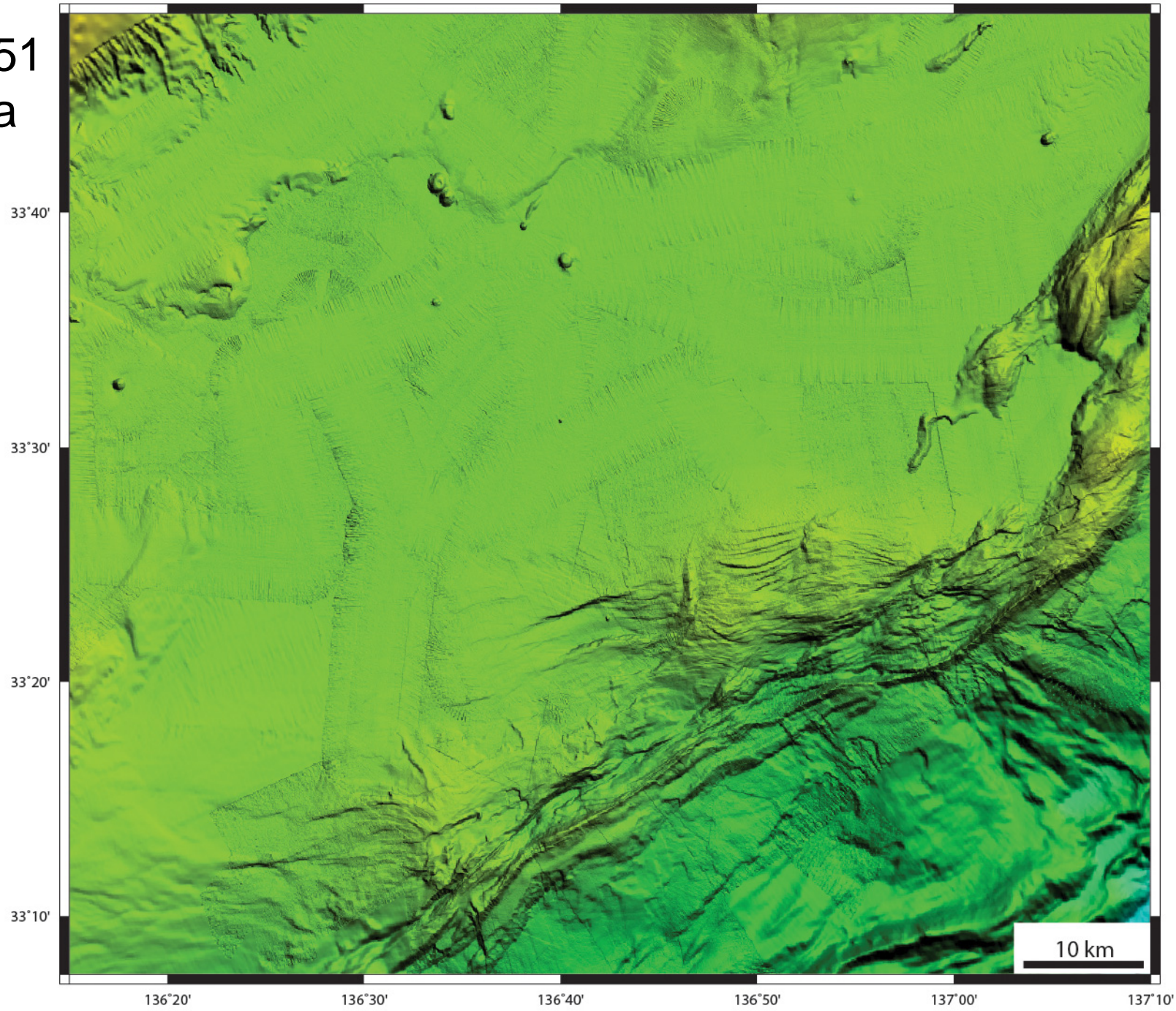




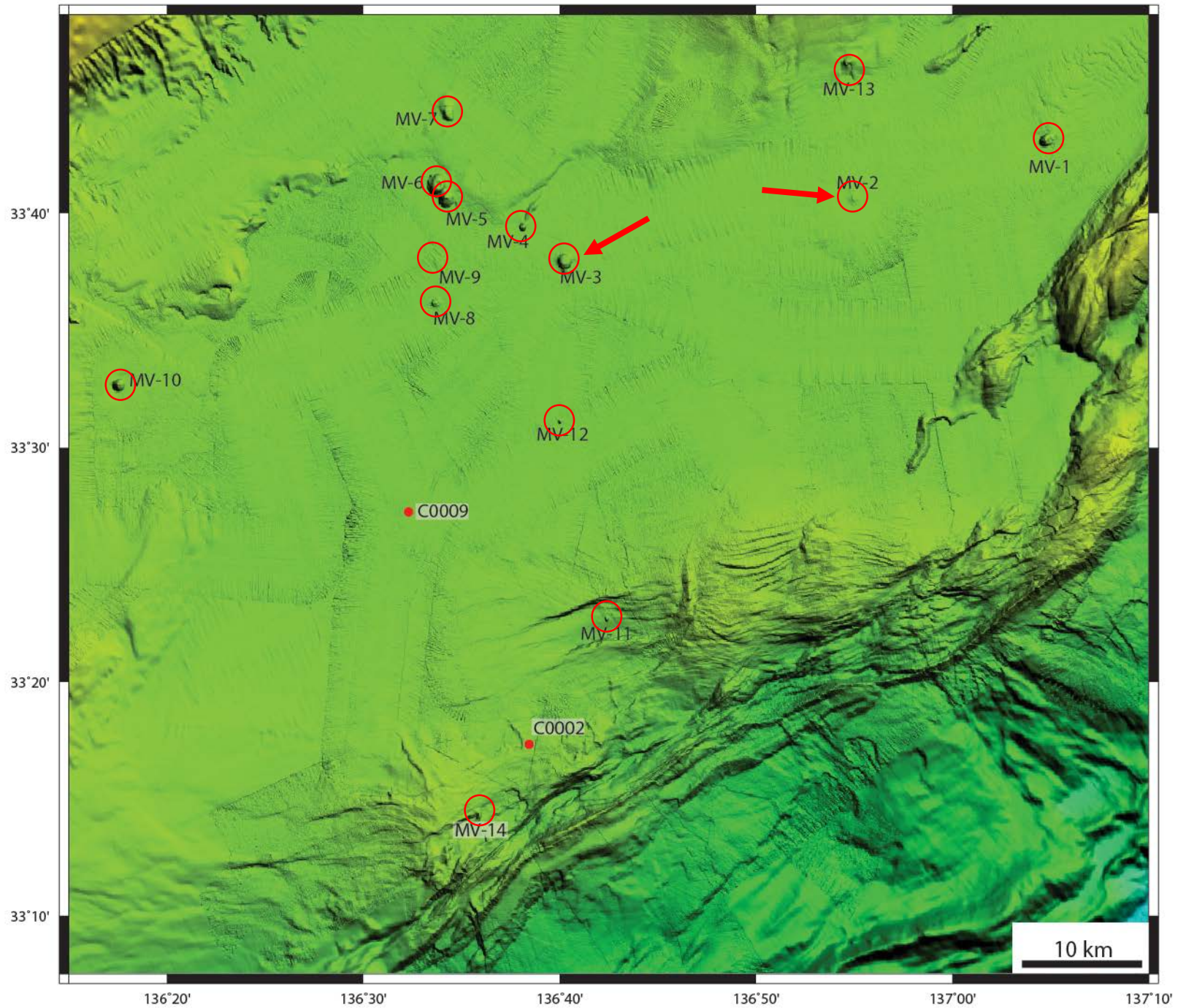




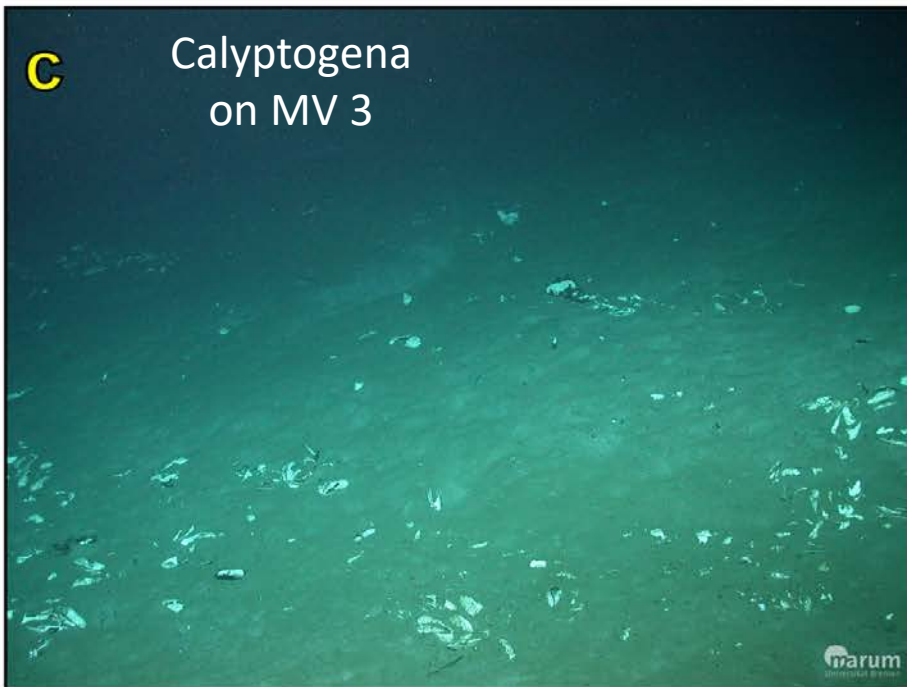
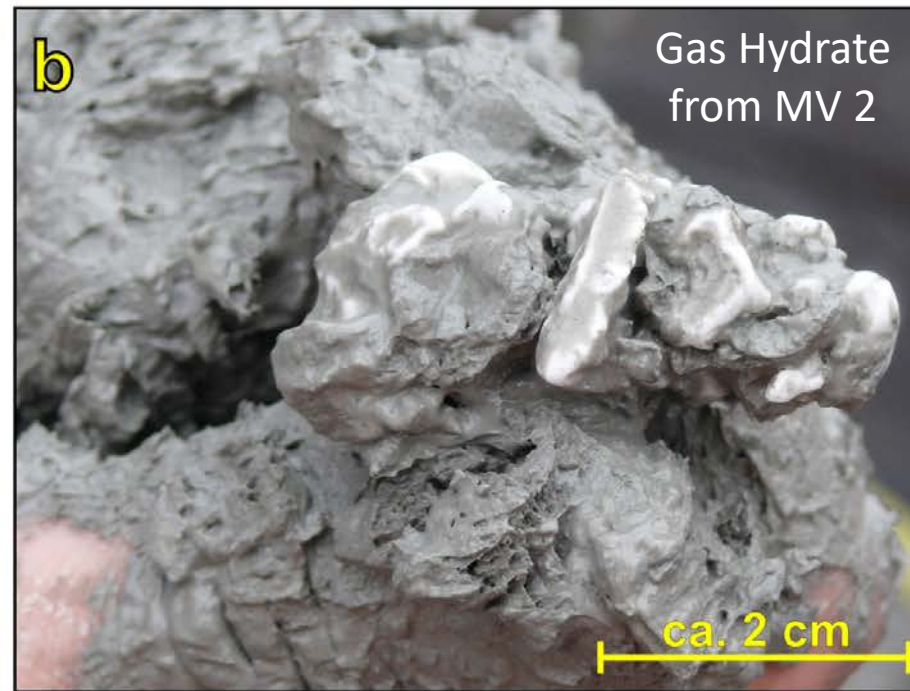
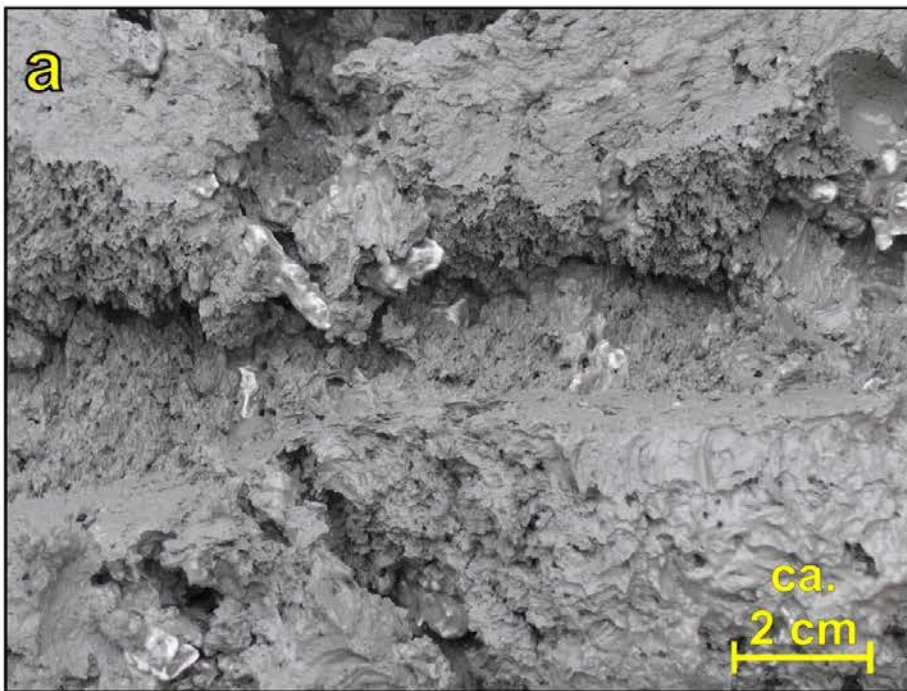
Sonne 251  
MB data



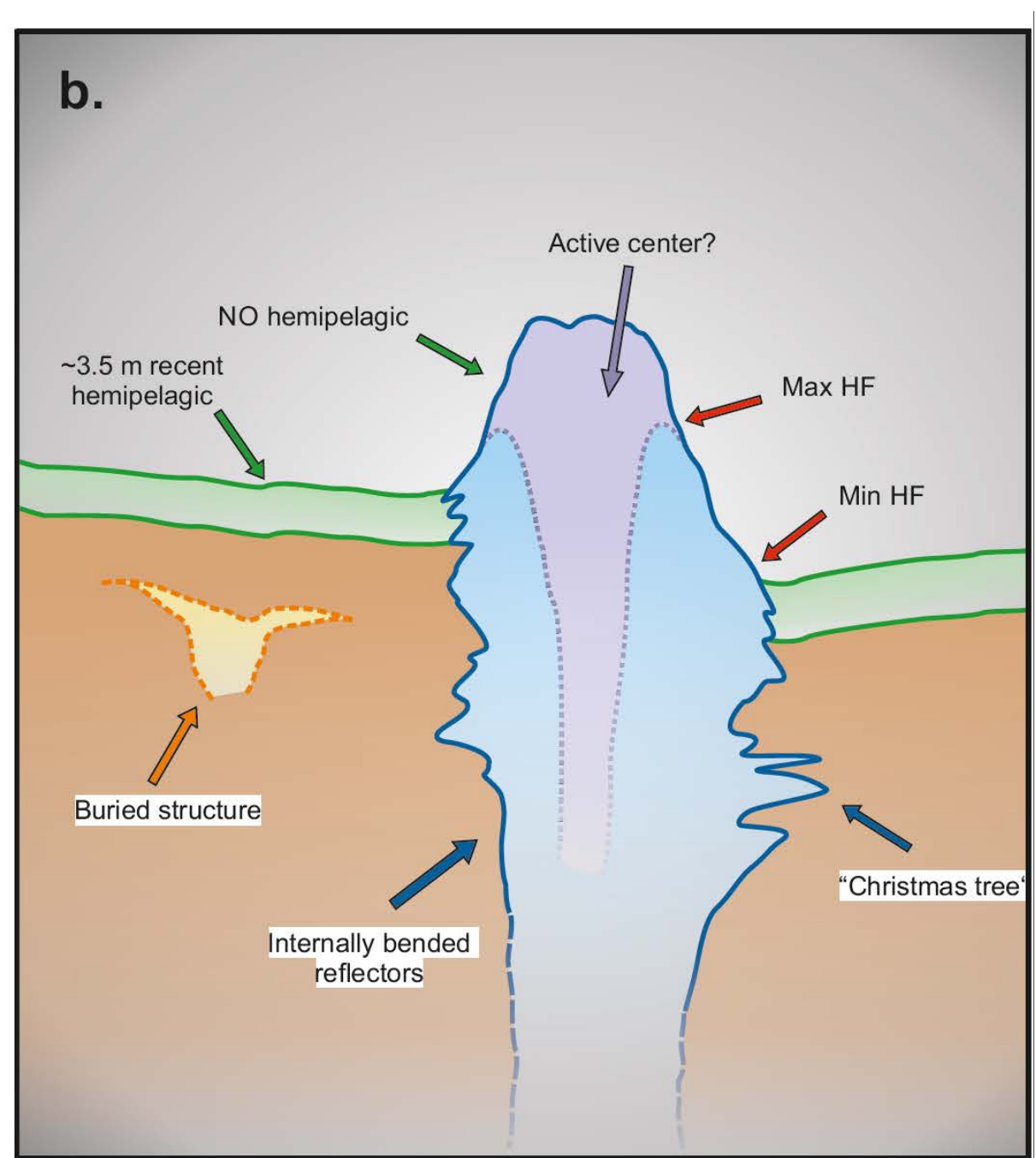
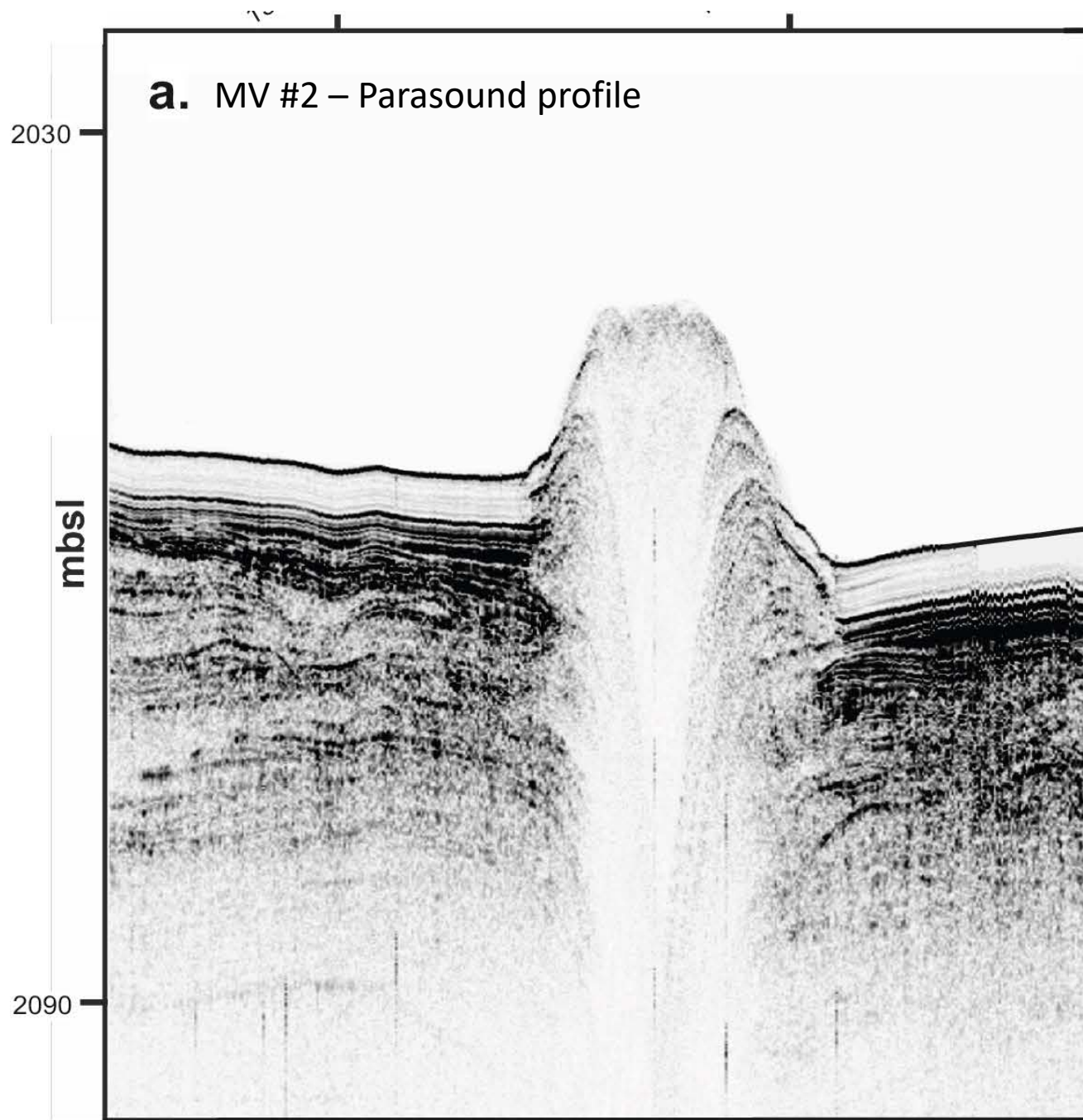














# Kumano Forearc Basin

