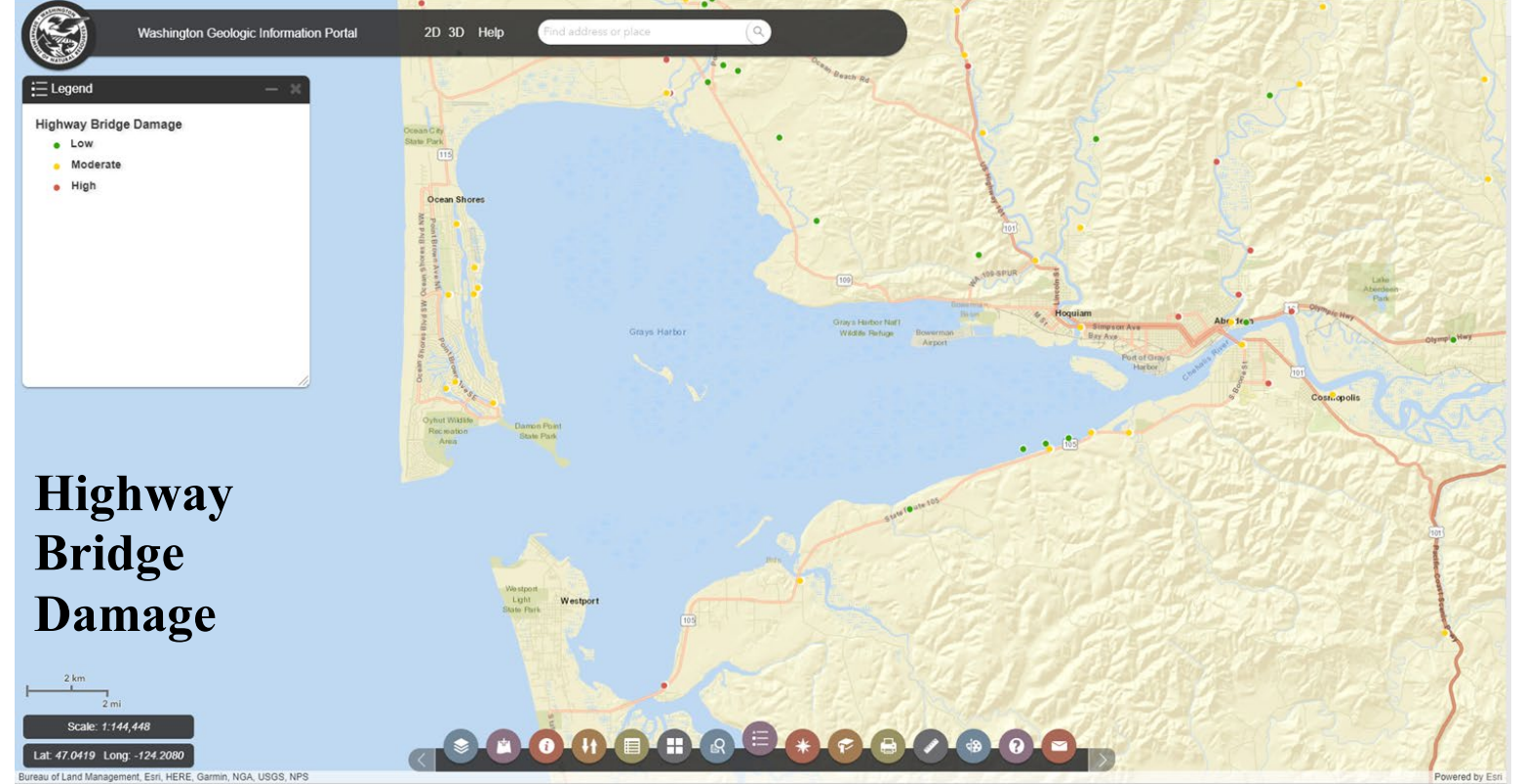
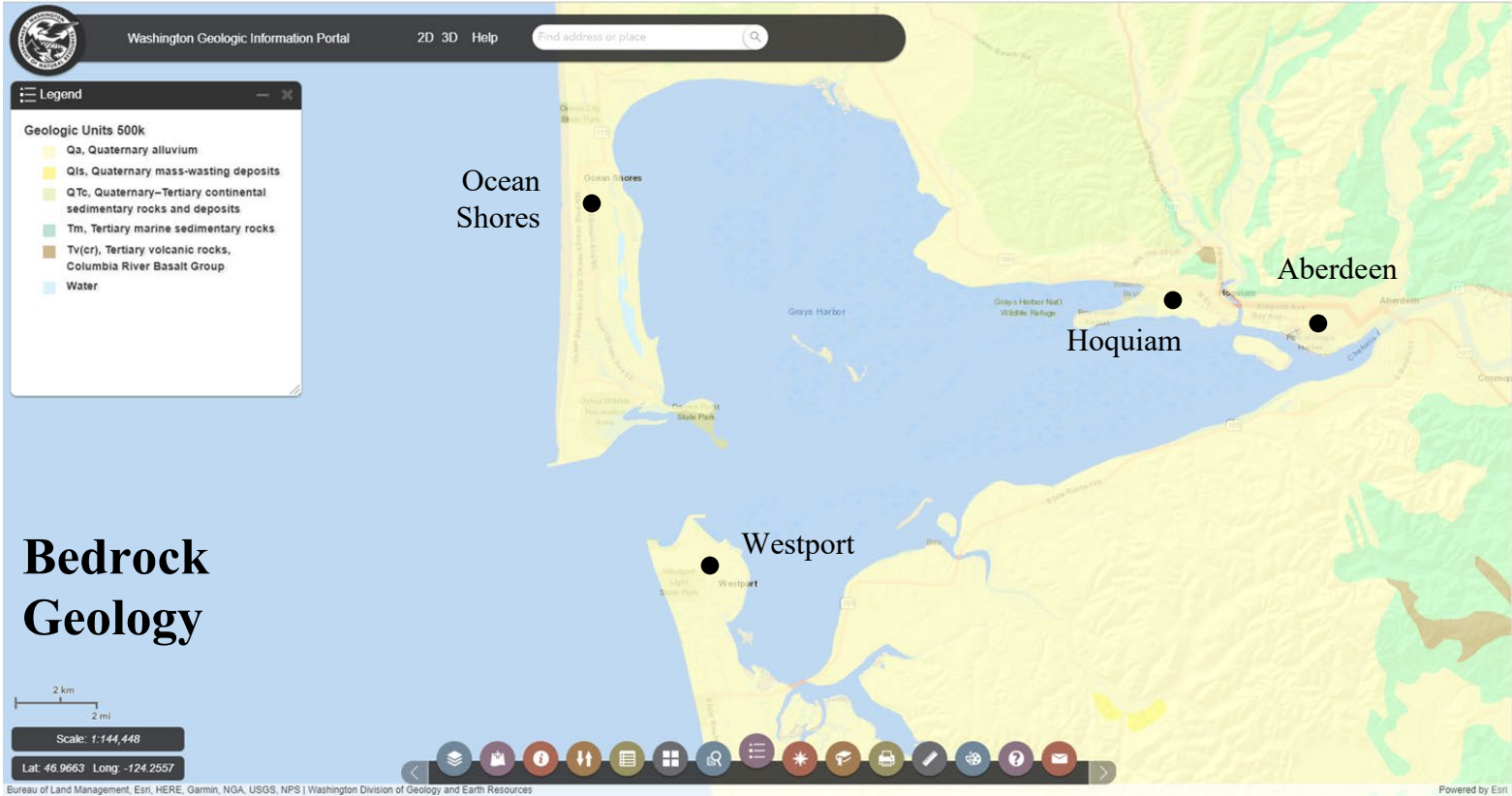
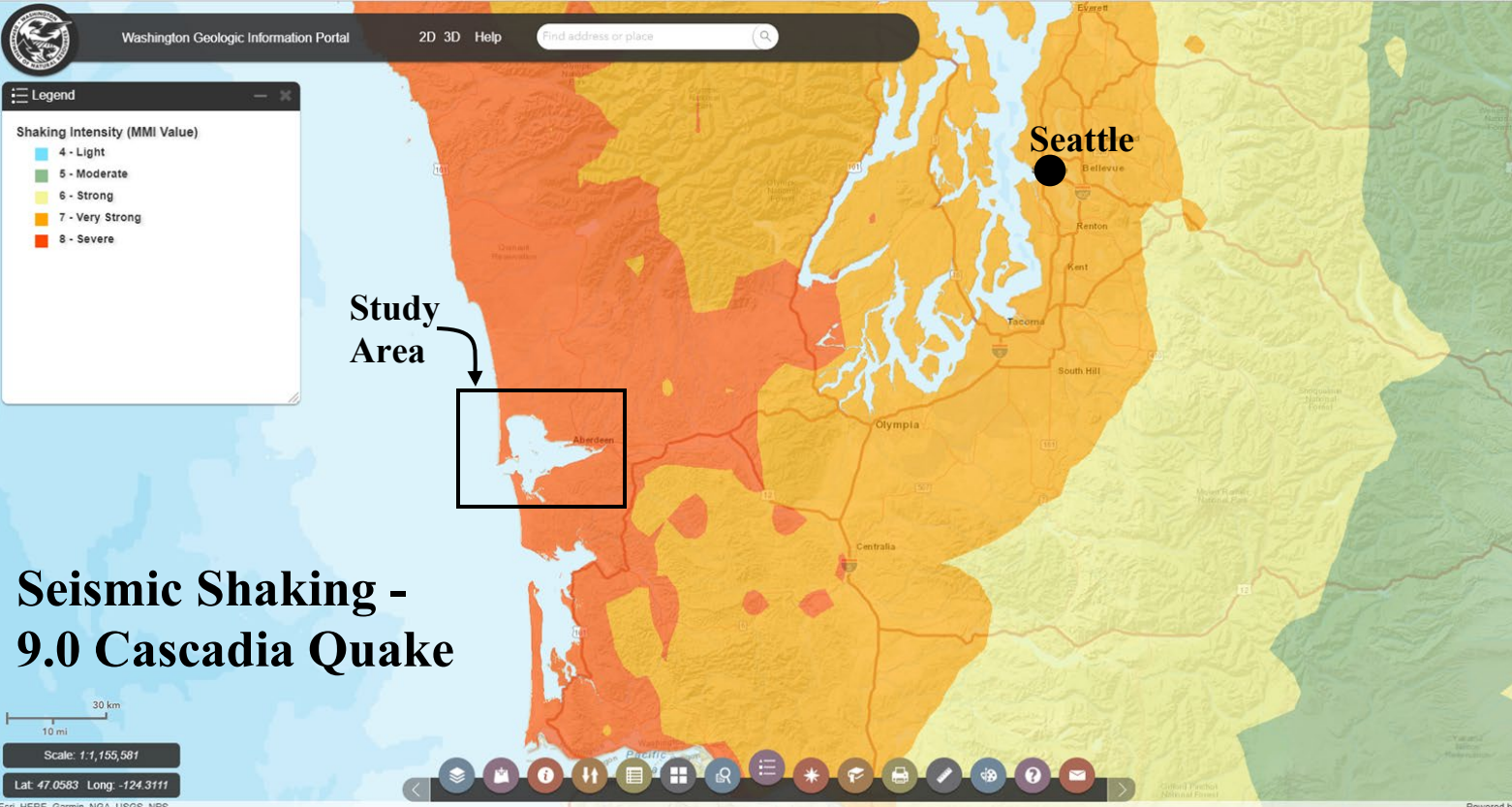
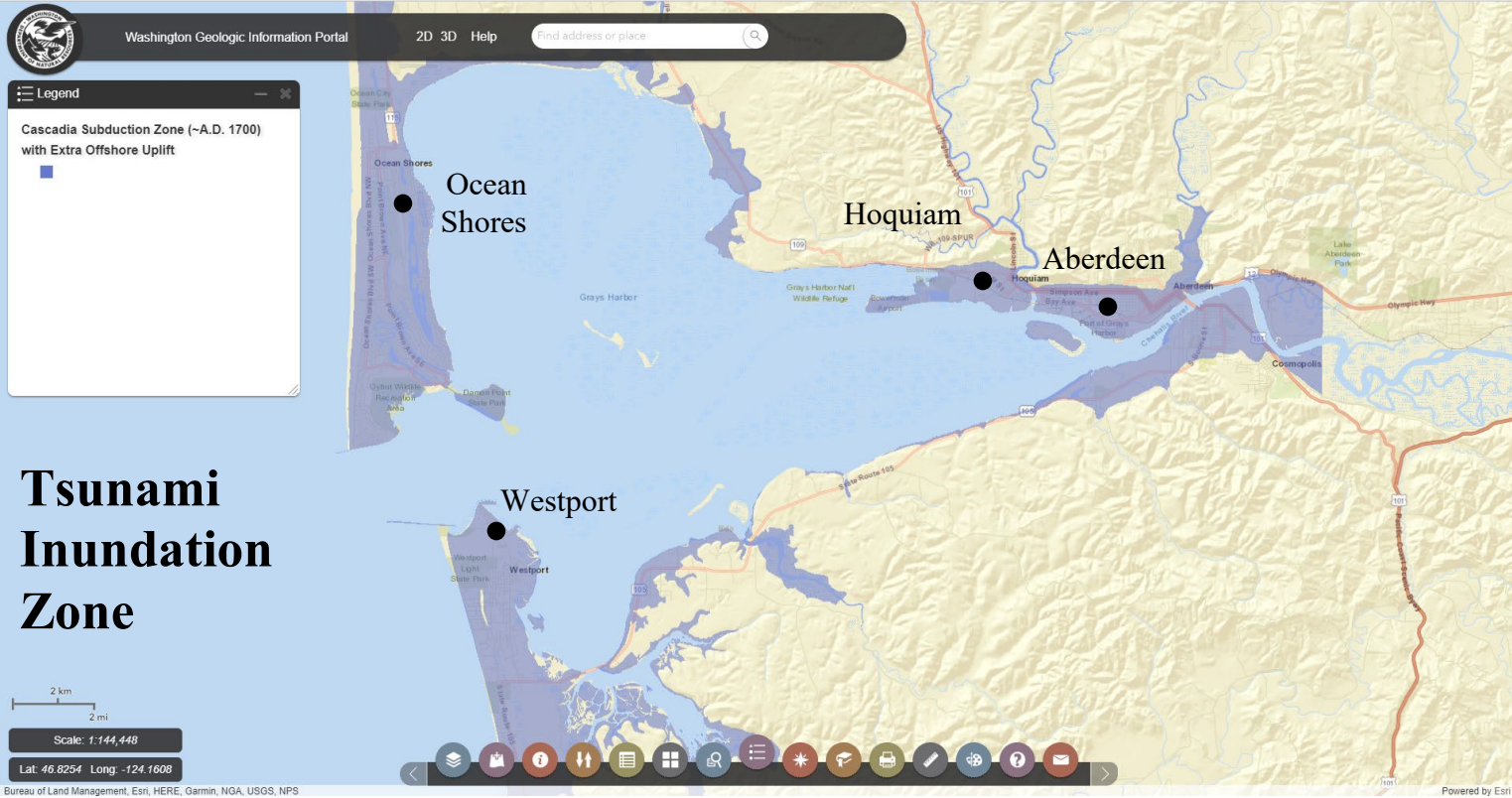
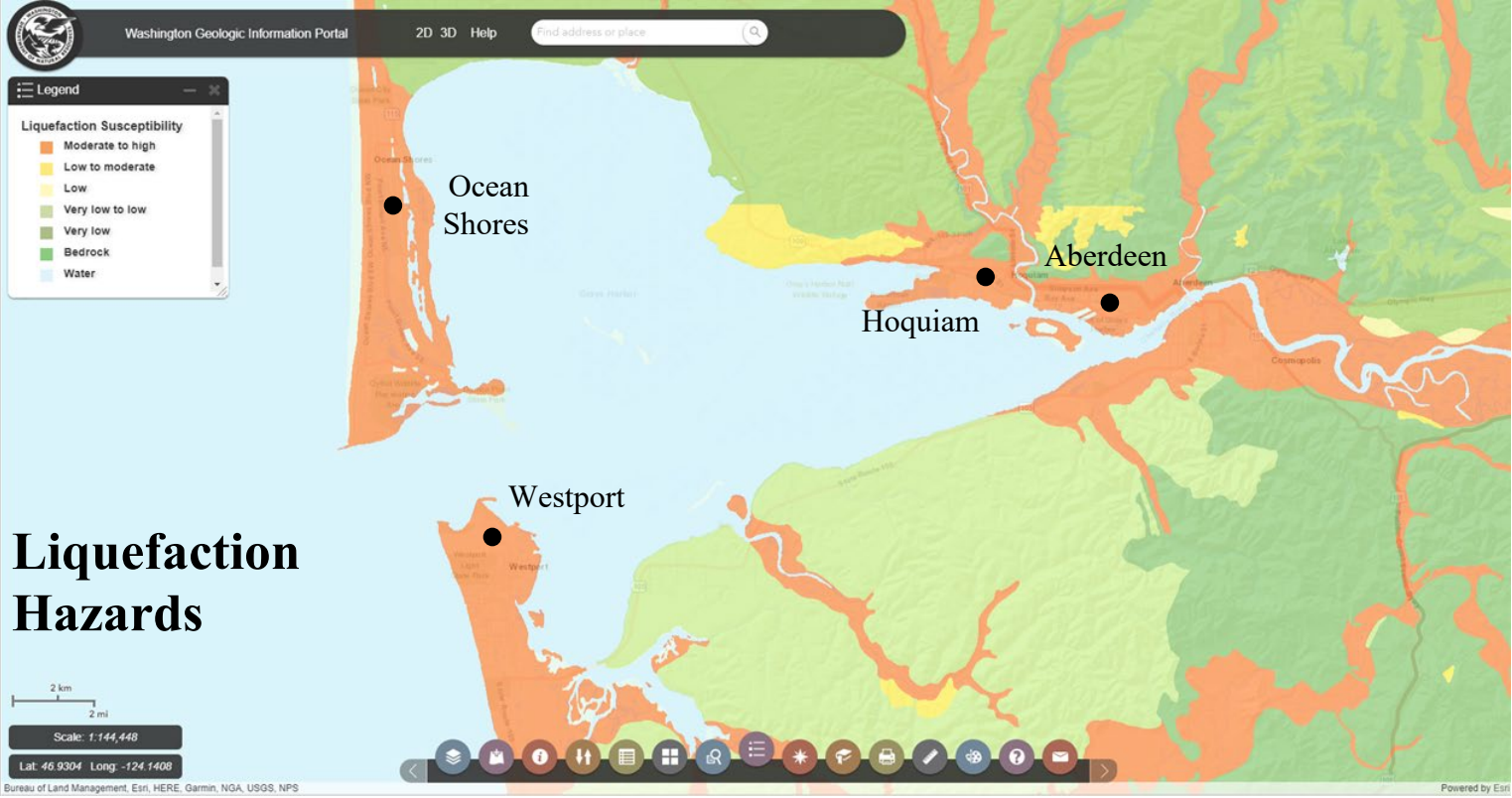


Gray's Harbor, WA

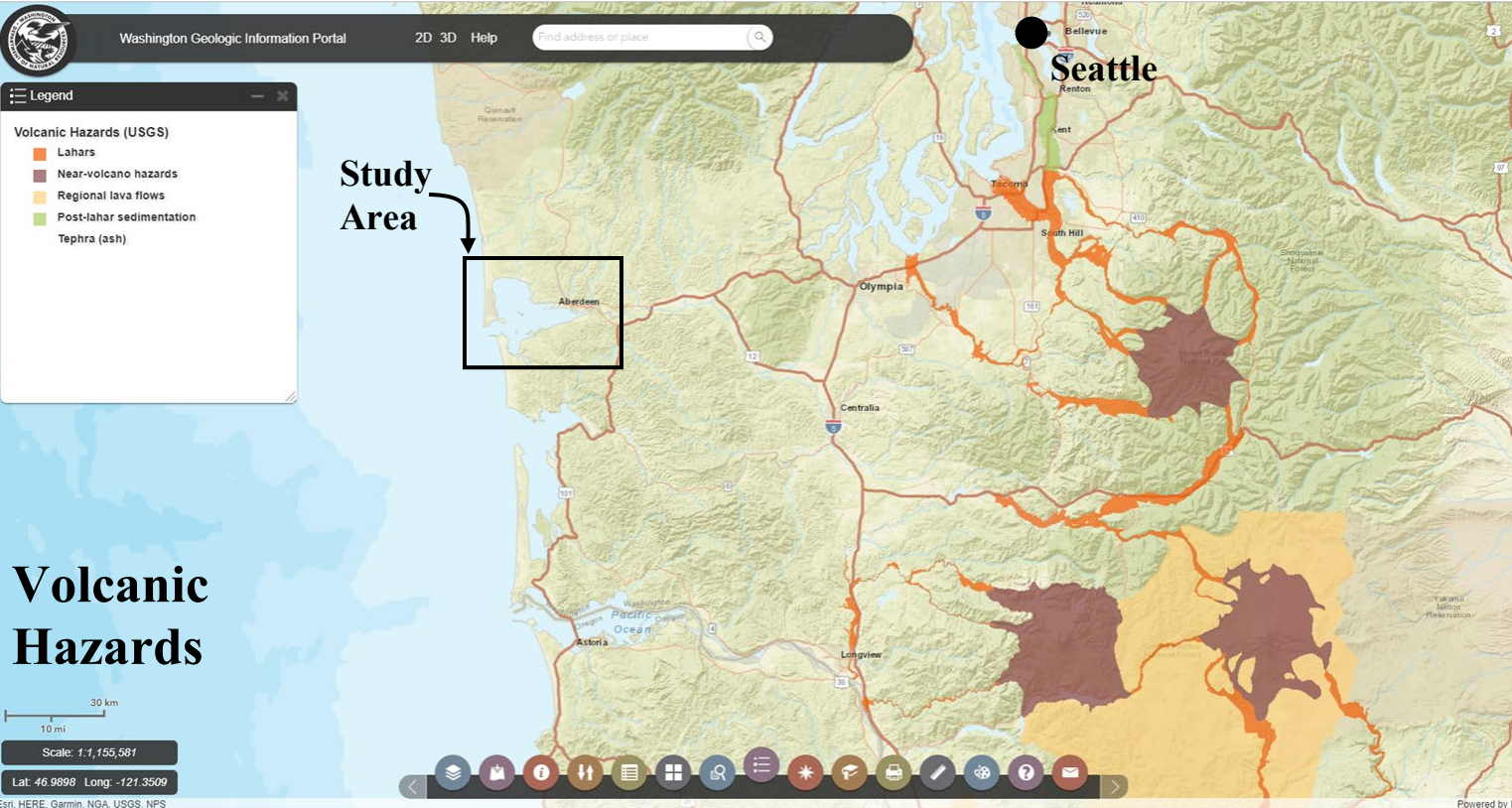




Tsunami Inundation Zone



Liquefaction Hazards



Volcanic Hazards

Grays Harbor is a large estuarine bay along the Washington Coast. The county of Grays Harbor has two major cities (Aberdeen and Hoquiam) located on at the mouth of the Chehalis River and contain most of the area’s infrastructure. On the coast, the small towns of Ocean Shores and Westport cater to tourists looking for time at the beach, and their populations soar during the summer months. The region was dominated by the logging and salmon fishing industries until both experienced severe declines in the 1960s-80s.

Population (2017)

- Grays Harbor County = 72,697
- Aberdeen = 16,462
- Hoquiam = 8,500
- Ocean Shores = 5,700 (permanent residents)
- Westport = 2,023 (permanent residents)

Estimated Damage from a 9.0 Cascadia earthquake

People without water day 1 = 9,808

Displaced Households = 1,670

People Requiring Shelter = 1,170

Injuries

- Not Requiring Hospitalization = 338 – 757
- Requires Hospitalization = 83 – 236
- Life Threatening = 8 – 52
- Fatalities = 17 – 76

Damaged Buildings

- Green Tag (Minimal damage – May inhabit) = 25,757
- Yellow Tag (Moderate damage - Limited habitability) = 5,192
- Red Tag (Severely damaged - Cannot enter) = 3,133
- # Inspectors = 262

Hospitals = 1 (140 Beds)

- Beds available Day 1 = 0
- Completely Damaged 72% Probability
- Extensive Damage = 27%
- Moderate Damage = 1%

Fire Stations = 13

- All Moderately Damaged

Schools = 22

- All Moderately Damaged

Aerial View of Aberdeen, Hoquiam,
and the Chehalis River
cardcow.com



Aerial View of Westport
portofgraysharbor.com