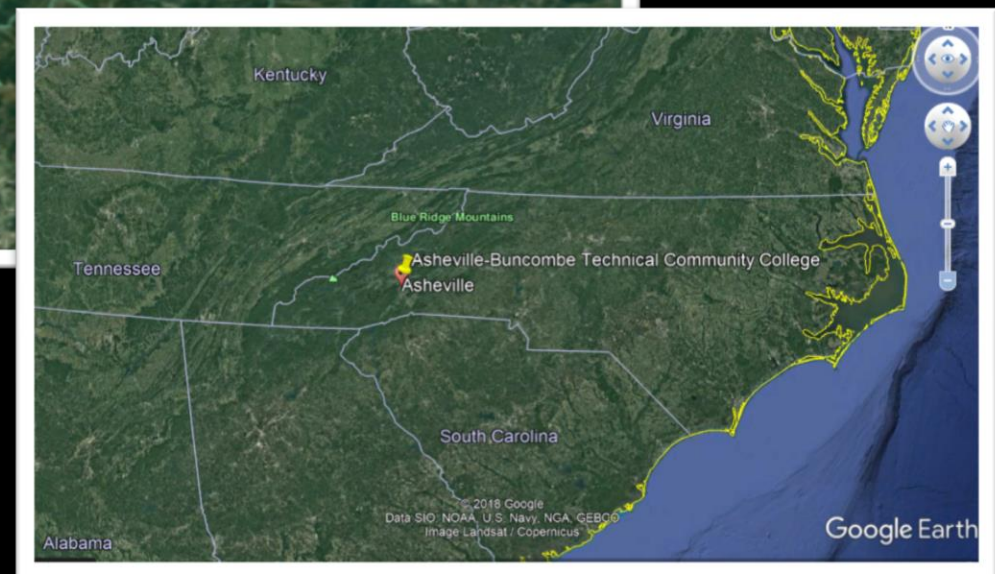
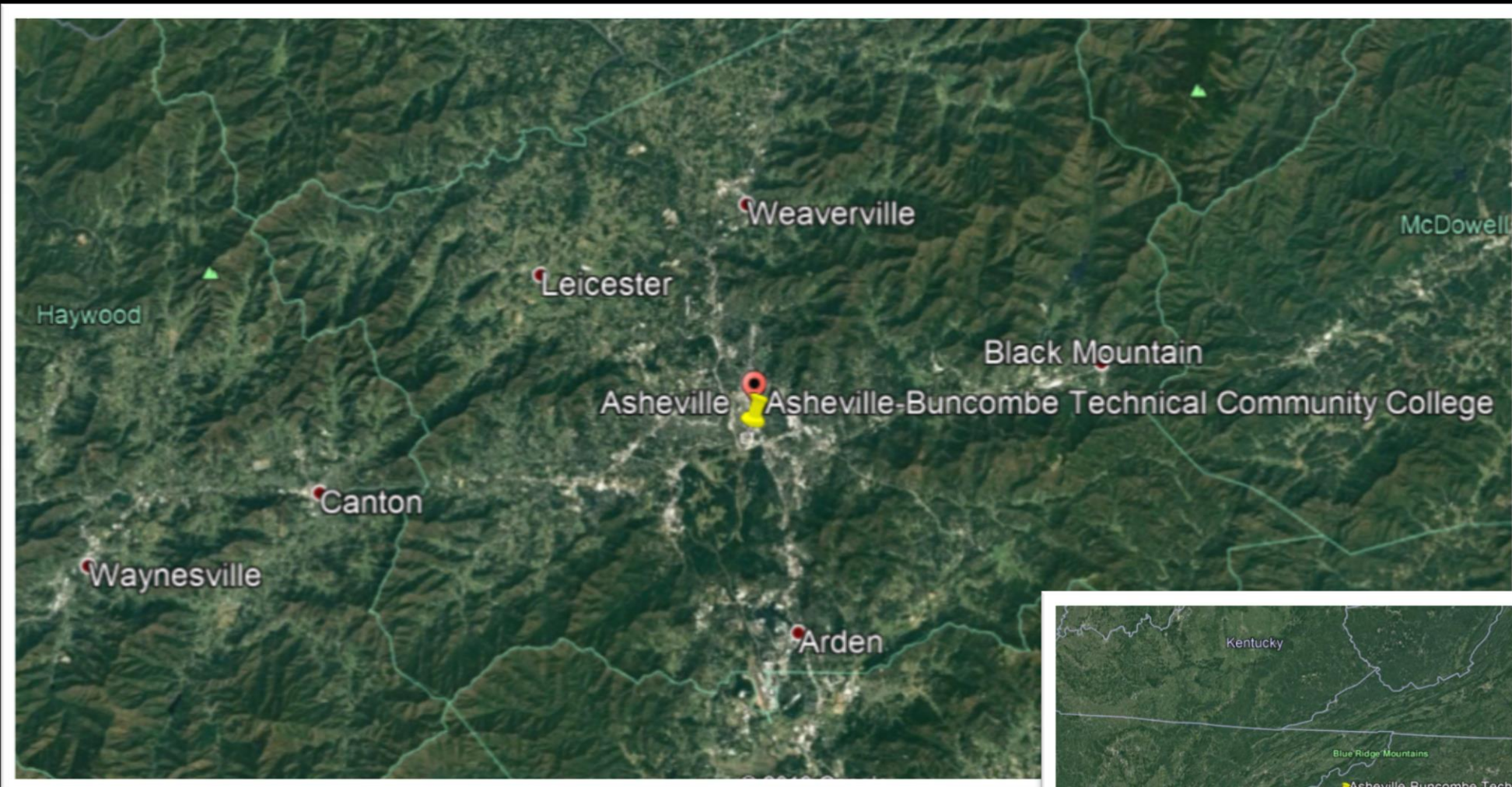


Mountains Around Us

Inquiry Based Learning Outside of the Classroom

Renee Mazurek, Asheville-Buncombe Technical Community College





What?



creativity decision making
issues research problem-solving construct
attitudes purposeful skill development thinking
roles gathering information investigation life-long learner
engaging processes authentic ownership action active engaged reflecting questions



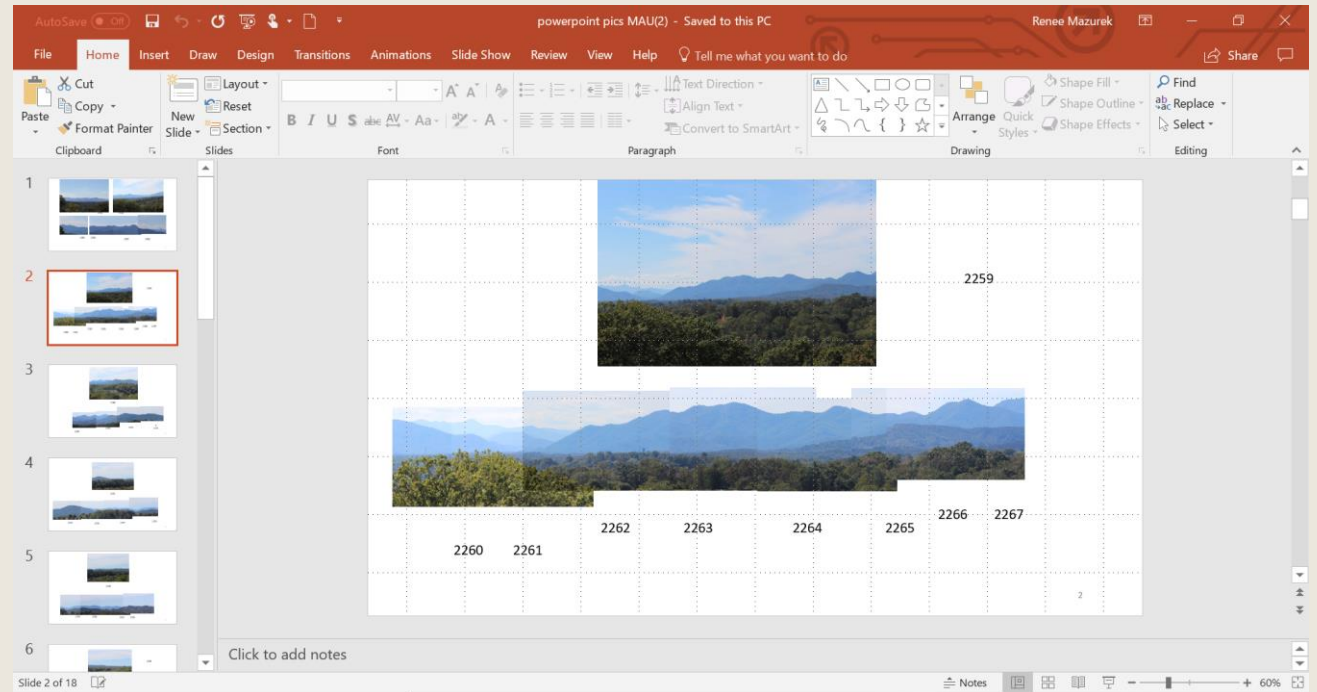
MOUNTAINS AROUND US PROJECT

Engaging Students in the Process from the Beginning

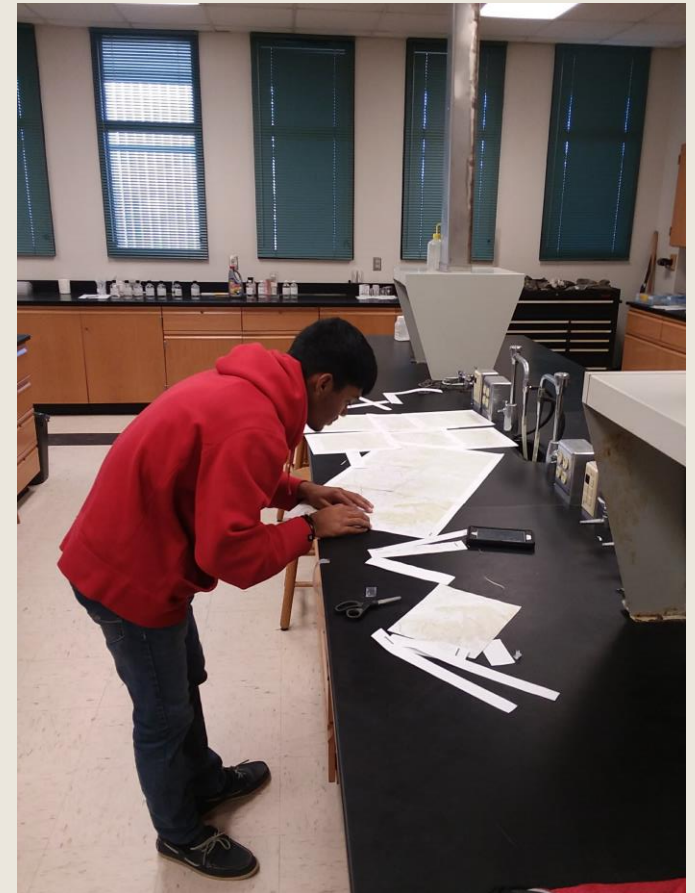
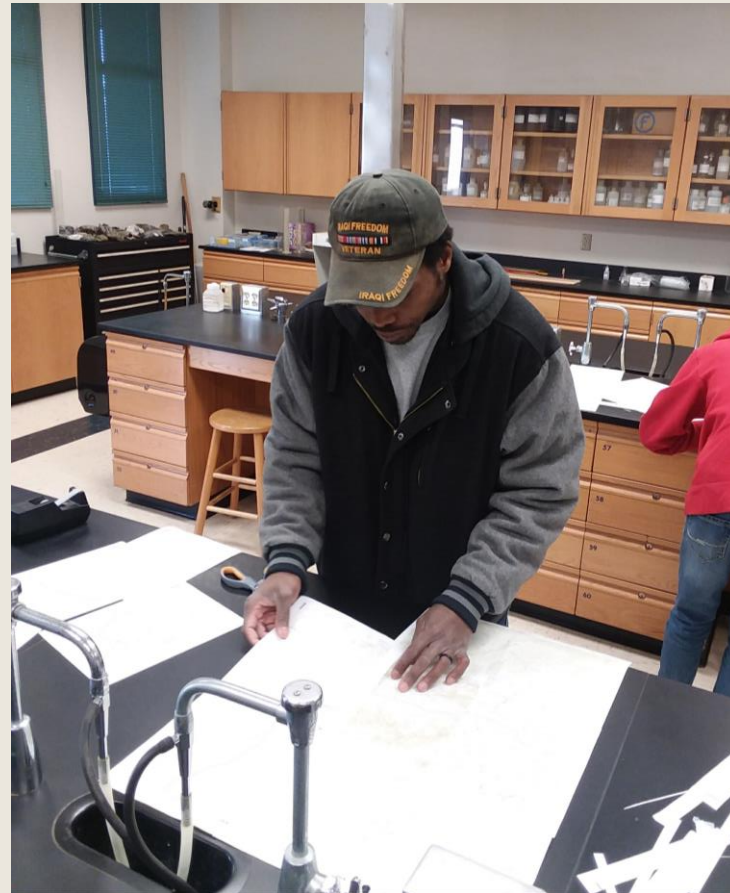
Taking Pictures

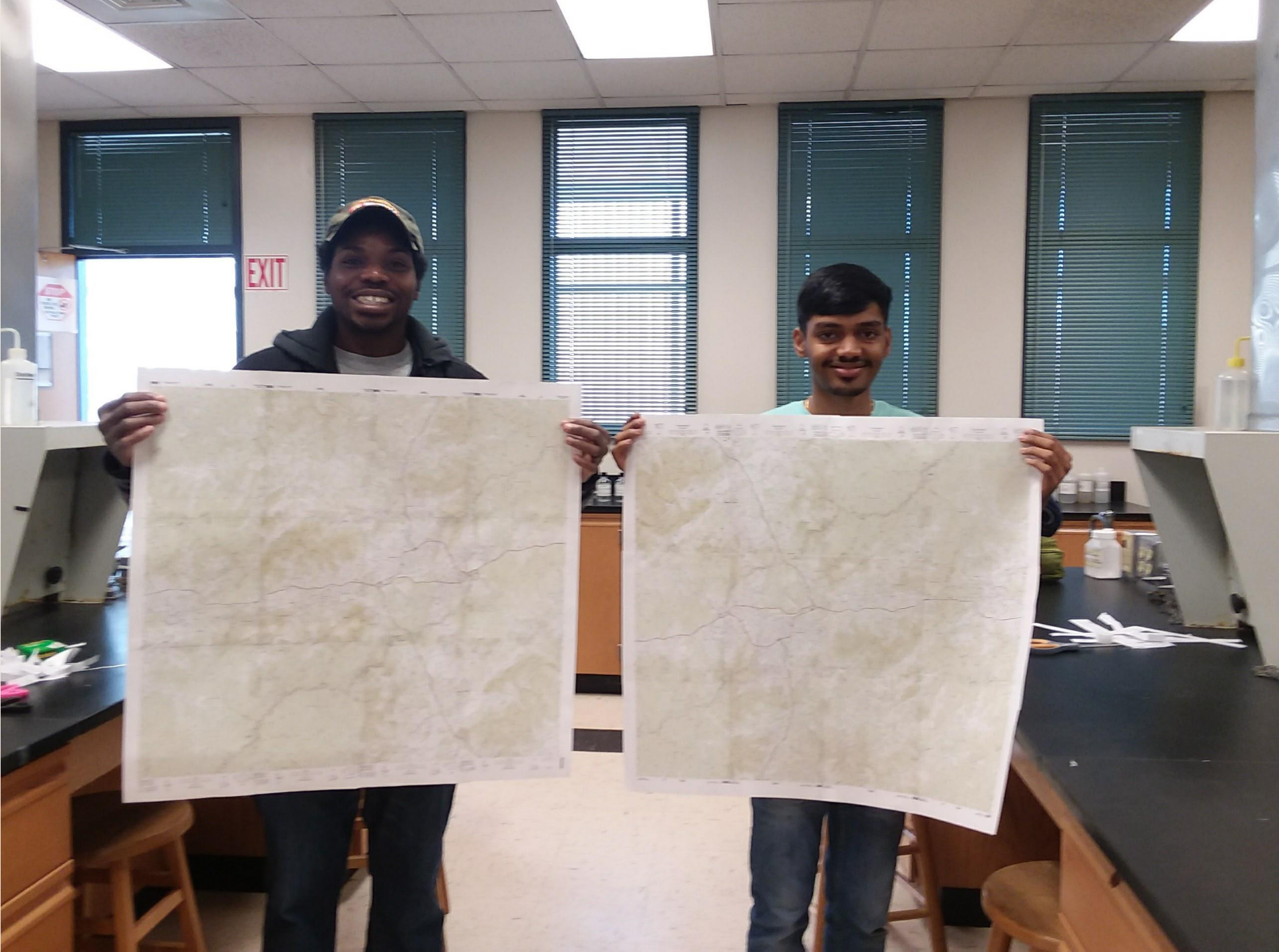


Creating Files with Photos

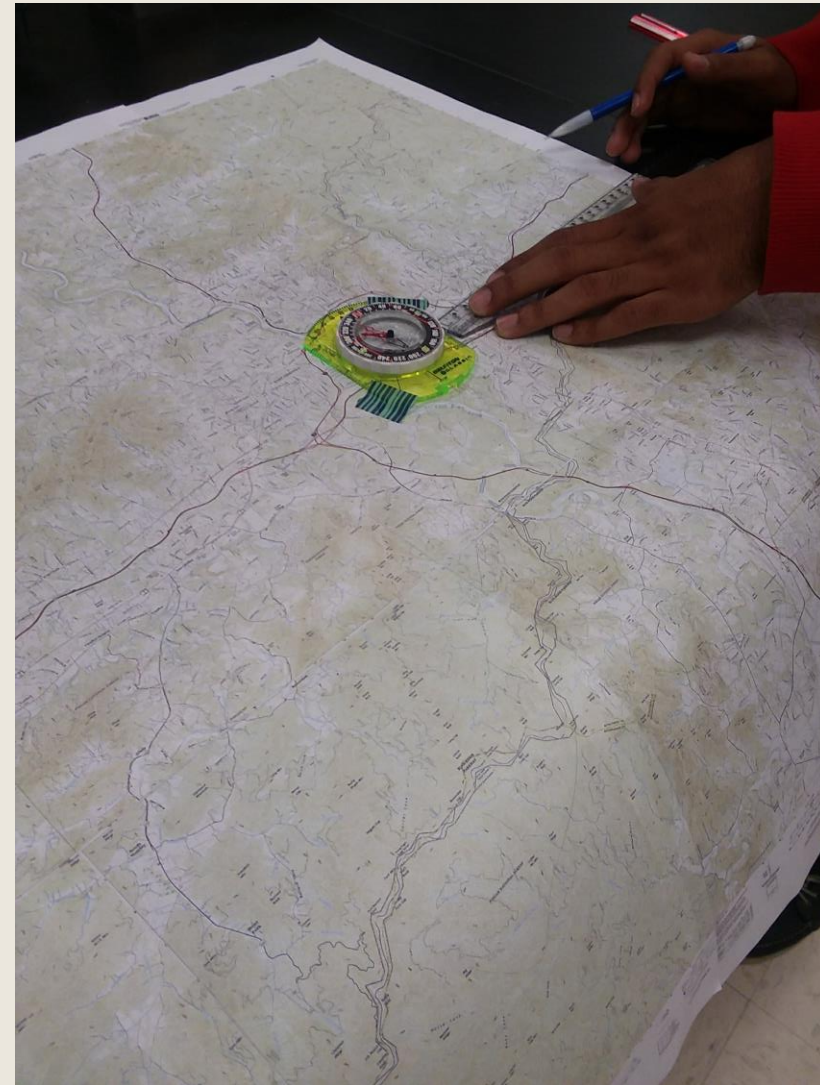


Creating Composite Maps





Adding compass Bearings to the Maps



Calculating Distances



Collecting Elevation Data

- Digital map analysis

<https://www.pickatrail.com/topo-map/a/7.5x7.5/asheville-nc.html>

2. Free Access - No Sign up!
3. Get Free Printable Forms

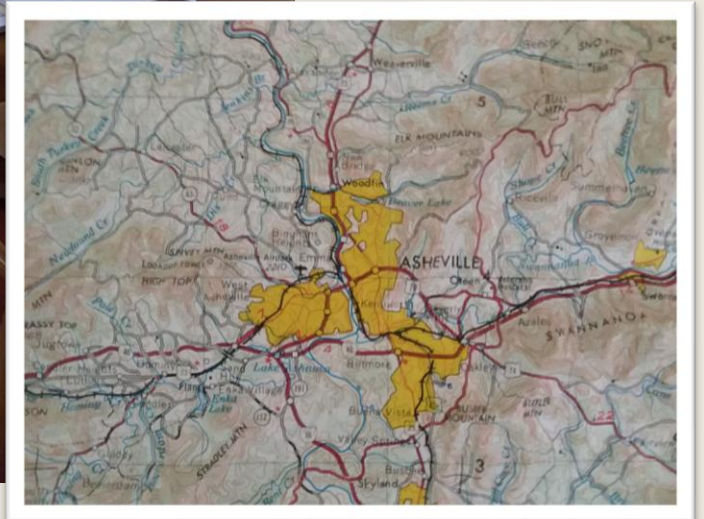
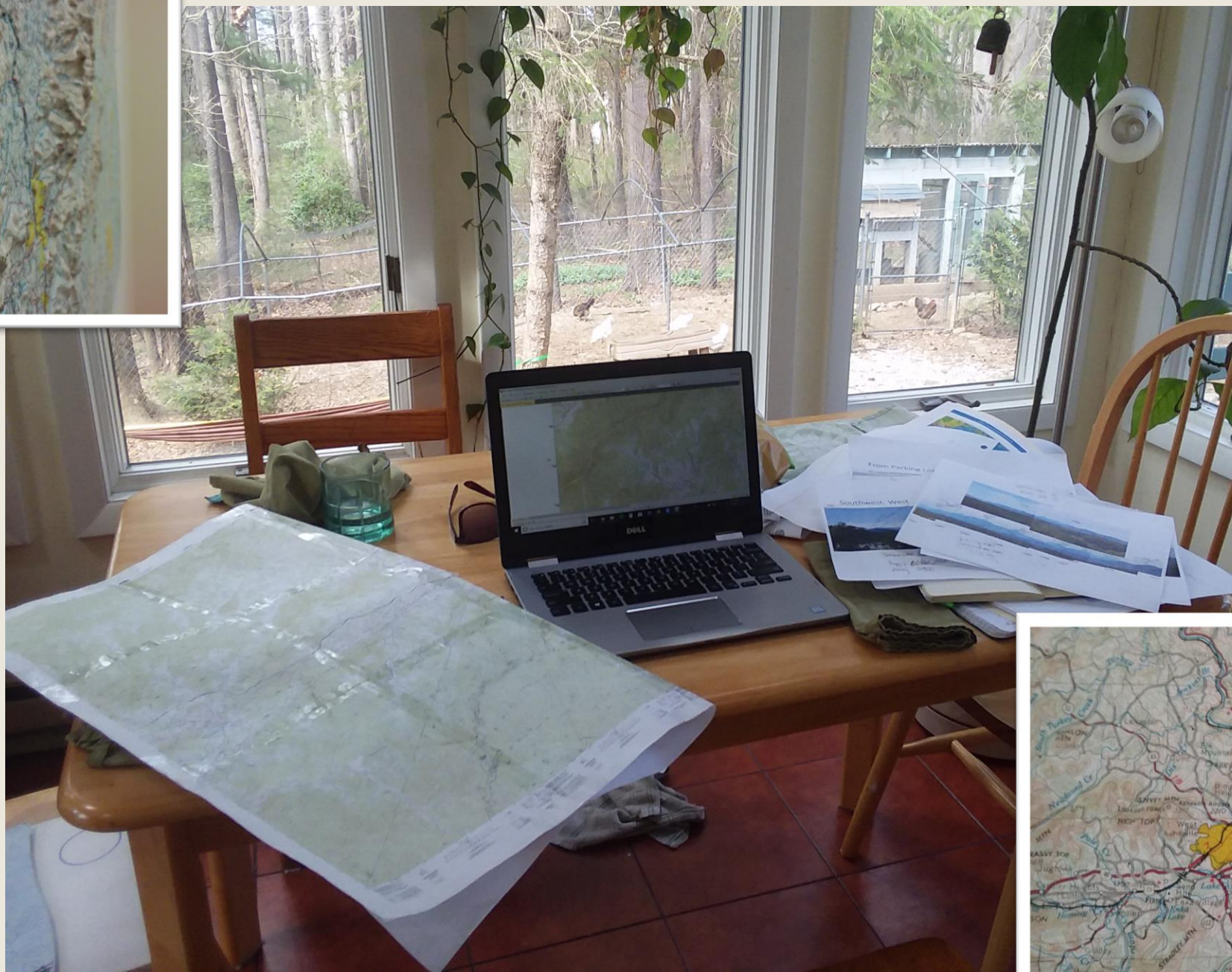
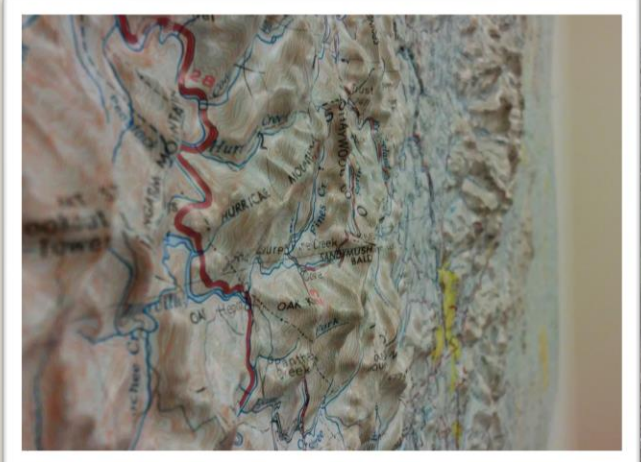
onlineformfinder.com

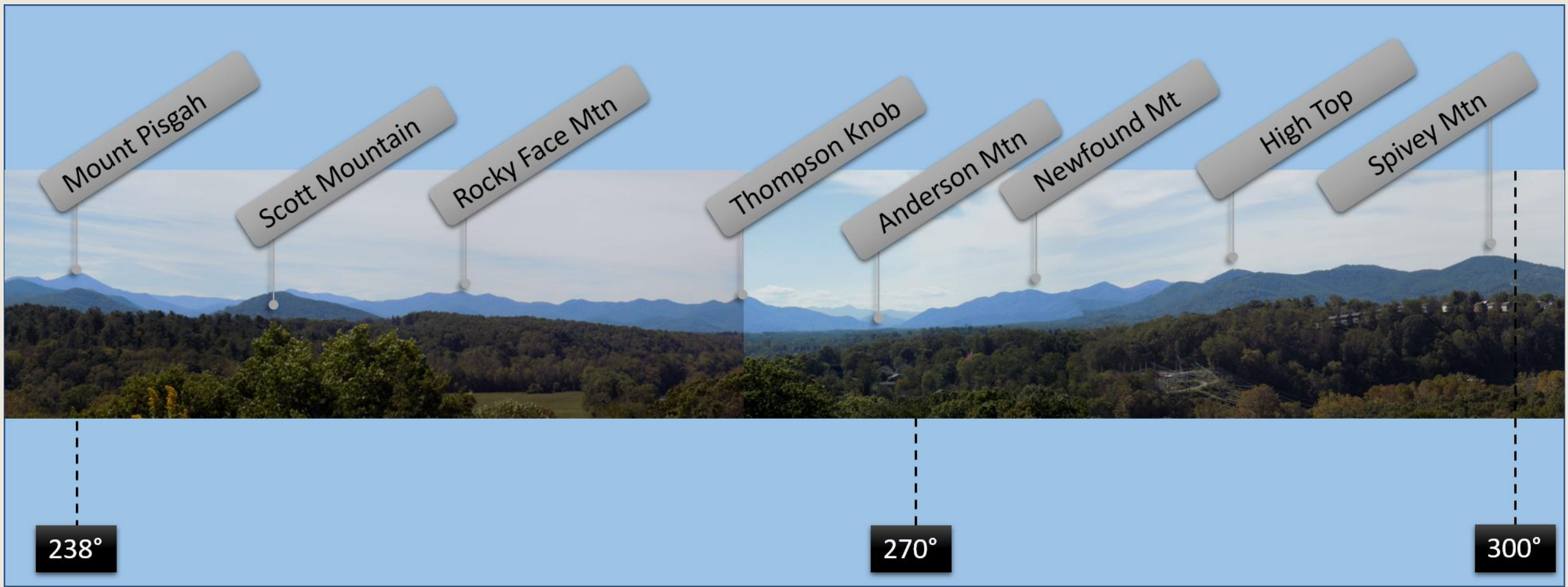
The image shows a topographic map of the Asheville, North Carolina area. The map features a grid overlay and a red rectangular box highlighting the Asheville city area. Key landmarks include Mt. Mitchell, Black Mountain, and Lake Lure. Major roads like I-40, I-26, and US-70 are visible. The map is sourced from Google and includes a scale bar for 5 km. The interface includes a 'Map' and 'Satellite' toggle, a search bar, and navigation controls.

Map data ©2018 Google | 5 km | Terms of Use

Identifying and Labeling Peaks







Mount Pisgah

Scott Mountain

Rocky Face Mtn

Thompson Knob

Anderson Mtn

Newfound Mt

High Top

Spivey Mtn

238°

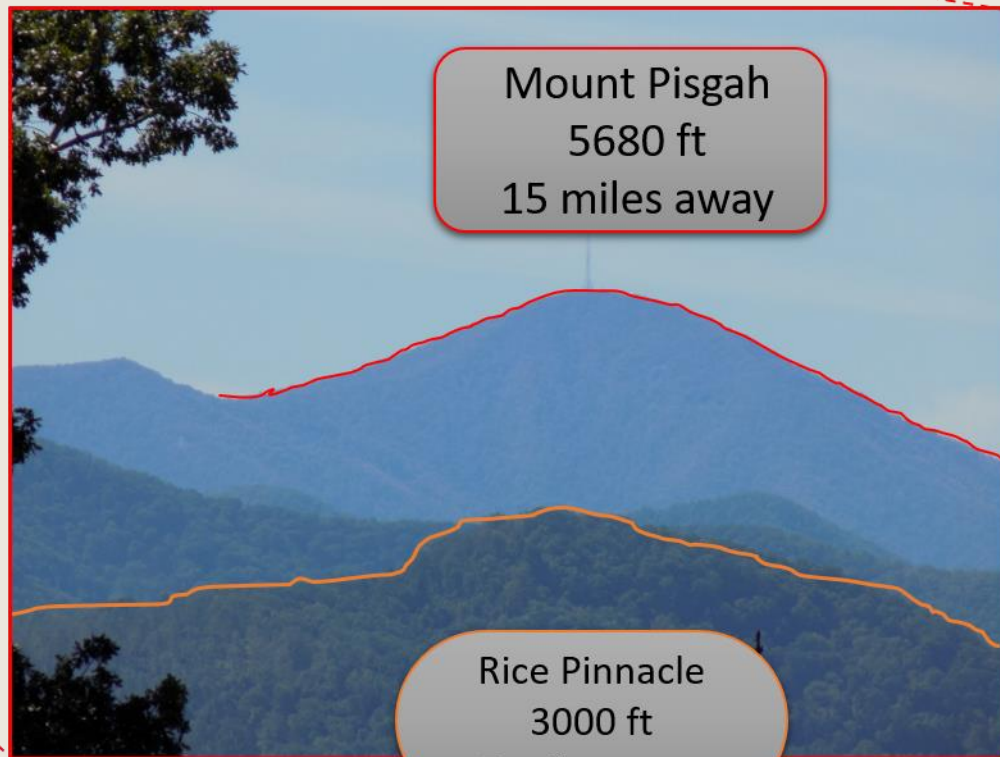
270°

300°

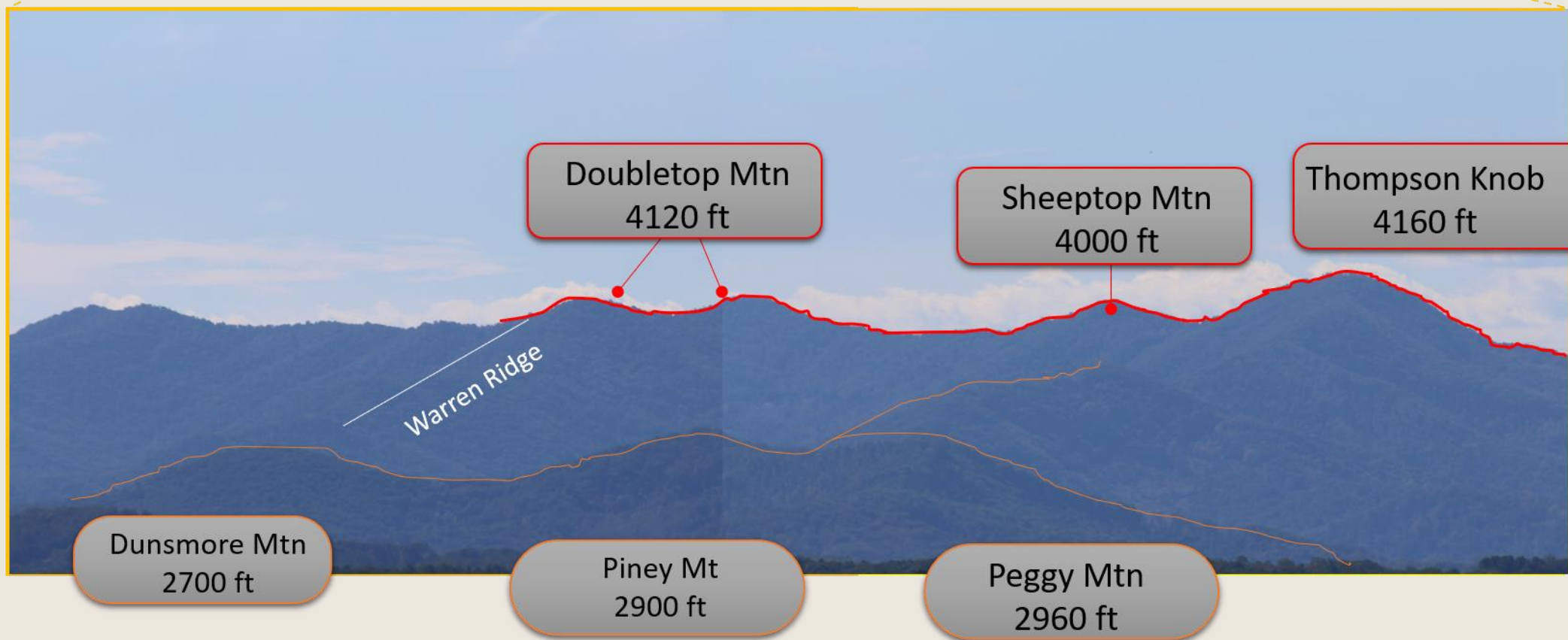
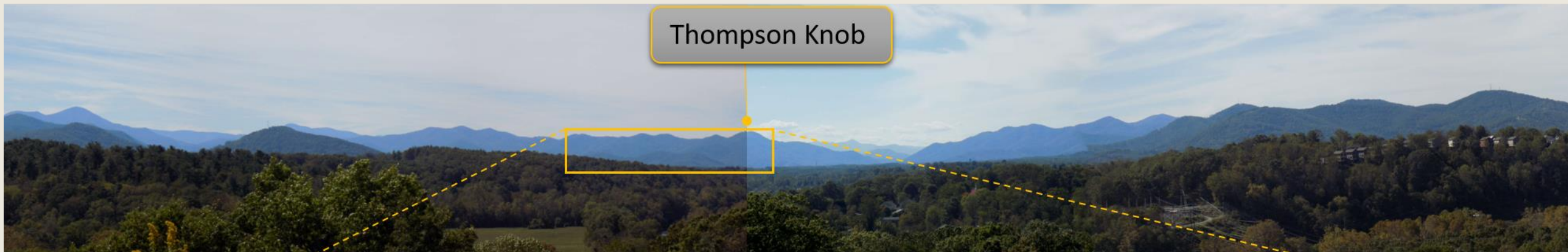
Mount Pisgah



Mount Pisgah
5680 ft
15 miles away



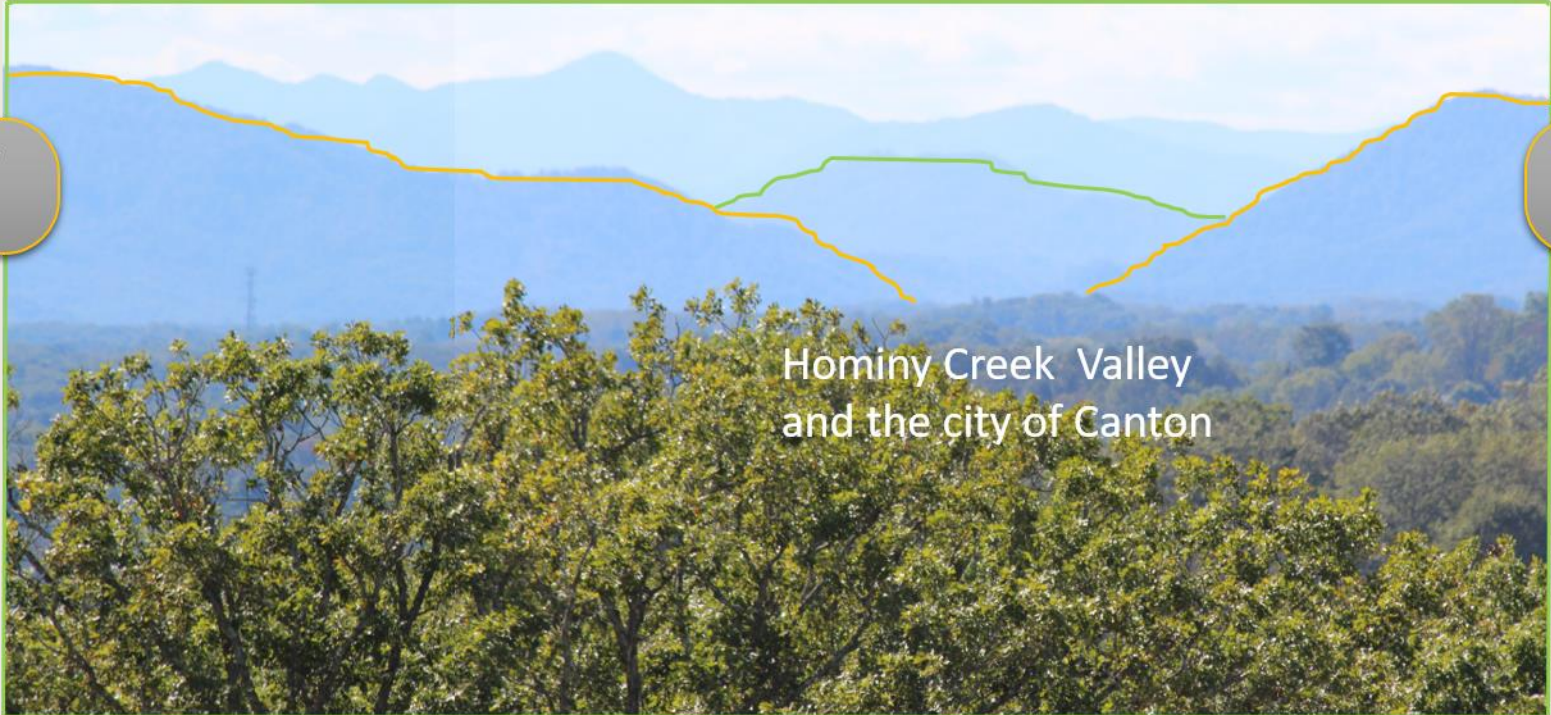
Rice Pinnacle
3000 ft
5 miles away





Anderson Mtn
3600 ft

Smather's View
3640 ft



Holland Mt/Grassy Top
4080 ft/4120 ft

Hominy Creek Valley
and the city of Canton



Newfound Mt



Billie Top
4040 ft

Newfound Mt
3680 ft

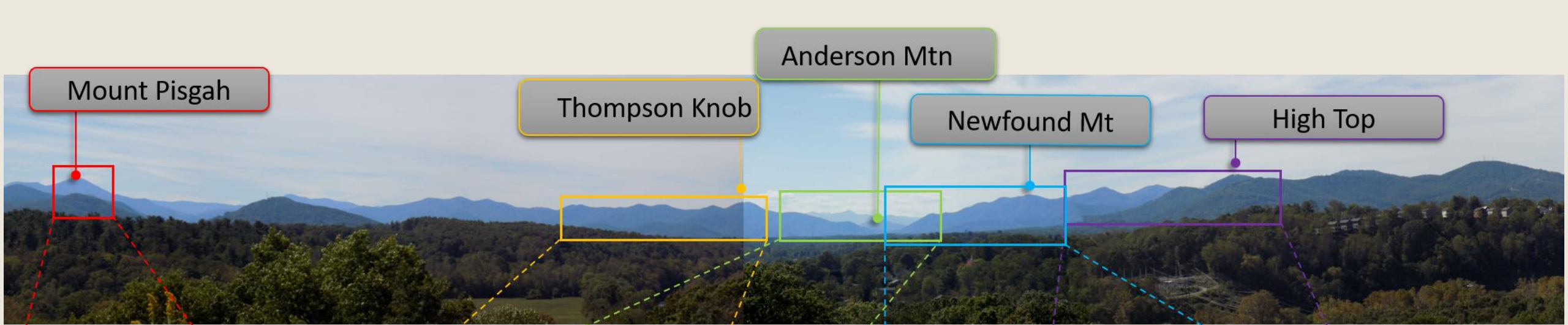
The Pinnacle
3960 ft

Starnes Ridge



High Top





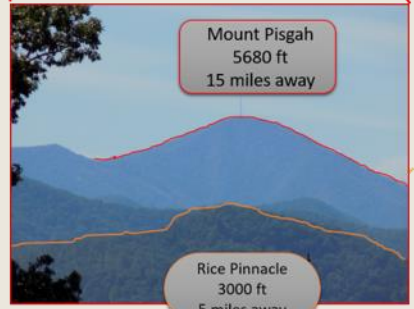
Mount Pisgah

Thompson Knob

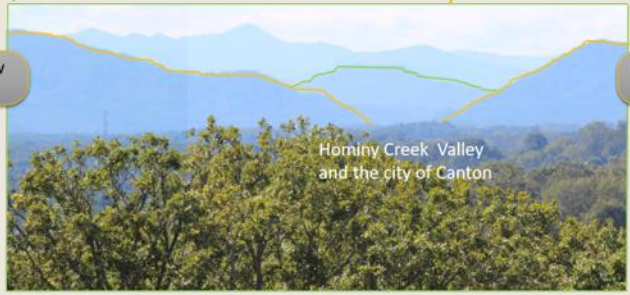
Anderson Mtn

Newfound Mt

High Top



Smather's View
3640 ft



Holland Mt/Grassy Top
4080 ft / 4120 ft



Billie Top
4040 ft

Newfound Mt
3680 ft

The Pinnacle
3960 ft

Starnes Ridge



Doubletop Mtn
4120 ft

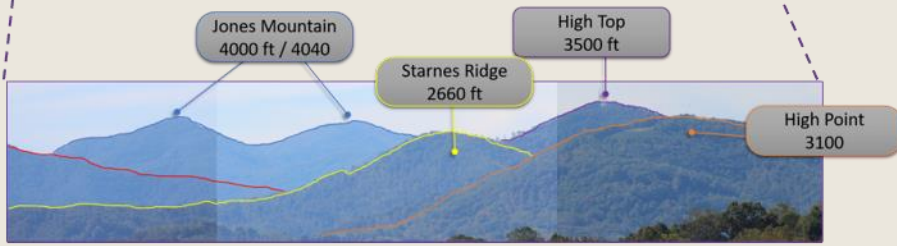
Sheeptop Mtn
4000 ft

Thompson Knob
4160 ft

Dunsmore Mtn
2700 ft

Piney Mt
2900 ft

Peggy Mtn
2960 ft



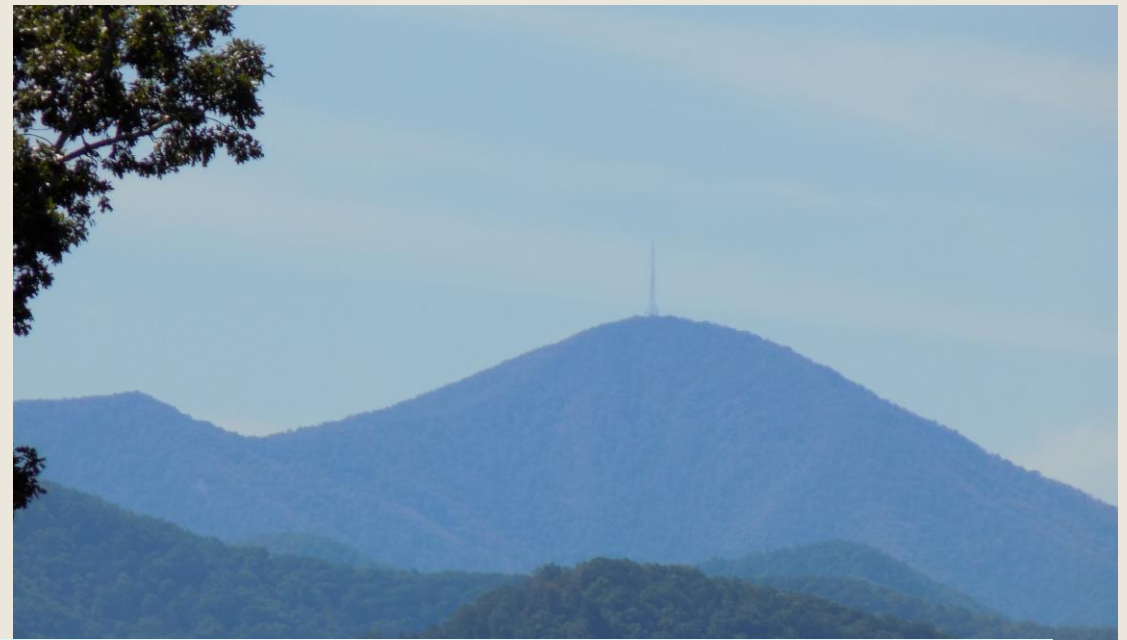
Jones Mountain
4000 ft / 4040

Starnes Ridge
2660 ft

High Top
3500 ft

High Point
3100

Researching Prominent Features



On the Horizon: Northern View



On the Horizon: Eastern View



On the Horizon...



Student Recognition:

Fall 2017:

Antuan Burke, Patricia Campbell, Wesley Hart, Colten Hollifield and Pratik Merchant

Spring 2018:

Morgan Avent, Michael Bellanger, and Sally Bobbitt