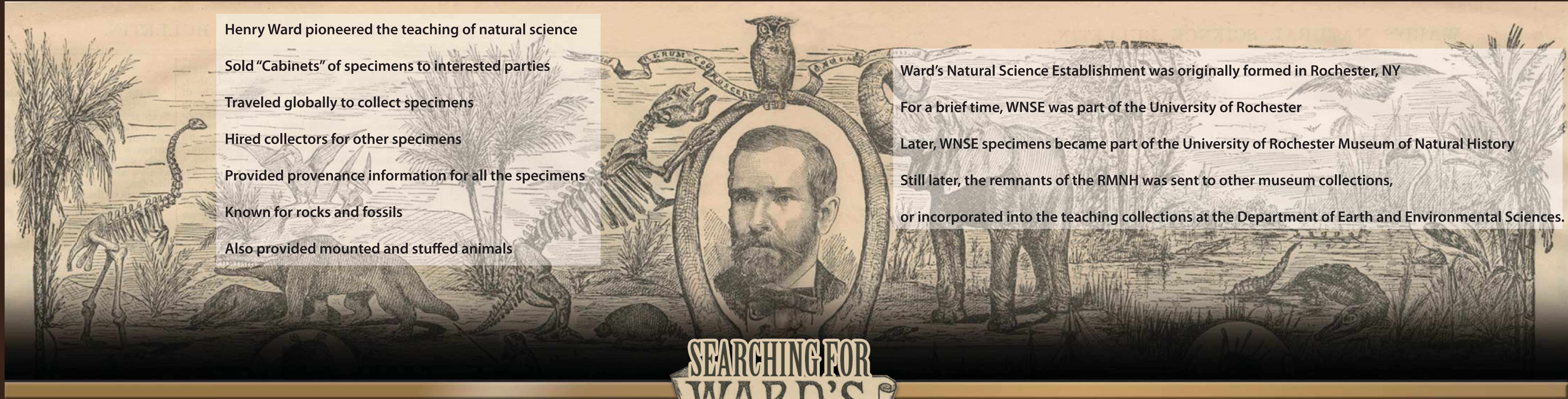


THE WARD PROJECT: STUDYING THE IMPACT OF HENRY WARD (FOUNDER OF WARD SCIENCE) ON THE TEACHING OF NATURAL SCIENCE STARTING IN THE LATE 19TH CENTURY AND CONTINUING TODAY

Penny Higgins - University of Rochester

ABSTRACT

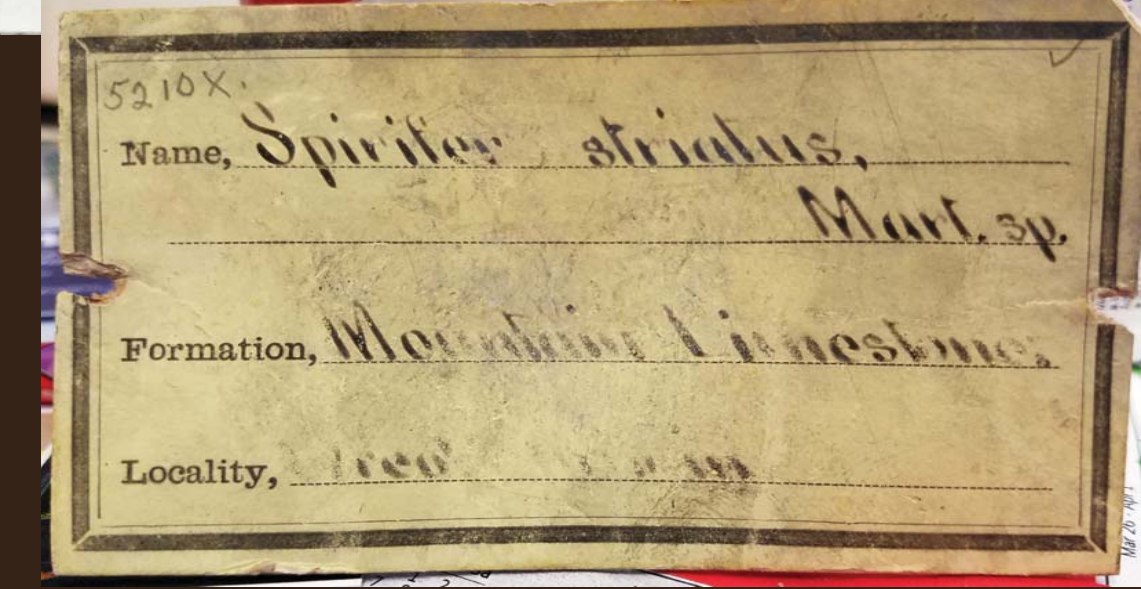
Soon after the University of Rochester was founded in 1850, it became closely associated with Henry A. Ward and his business enterprise of collecting, trading and selling biological and geological specimens to natural history museums worldwide. In the late-1800's the third largest natural history museum in the United States was at the University of Rochester. This museum (the University of Rochester Museum of Natural History - URMNH) housed material purchased almost entirely from Ward's Natural Science Establishment (WNSE - today called Ward Science). Here we present a new project compiling and making available on line original catalogs and bulletins of WNSE, hand-written correspondence between Henry Ward and global contributors to and customers of WNSE, and international collections of specimens originally sold by WNSE, including photographs and 3D scans. The Ward Project's aim is to make the specimens associated with the URMNH, and the extensive collection of papers associated with the Ward's Natural Science Establishment housed in the Rare Books Collections of the River Campus Libraries of the University of Rochester broadly available to the public, historians, biologists, and institutions worldwide. The Ward Project focuses on the period from 1860-1906 and is intended to facilitate research into the important contributions that Rochester made to the development of natural history museums, natural history education, and the conservation movement. The project is available at wardproject.org.



- Henry Ward pioneered the teaching of natural science
- Sold "Cabinets" of specimens to interested parties
- Traveled globally to collect specimens
- Hired collectors for other specimens
- Provided provenance information for all the specimens
- Known for rocks and fossils
- Also provided mounted and stuffed animals

- Ward's Natural Science Establishment was originally formed in Rochester, NY
- For a brief time, WNSE was part of the University of Rochester
- Later, WNSE specimens became part of the University of Rochester Museum of Natural History
- Still later, the remnants of the RMNH was sent to other museum collections, or incorporated into the teaching collections at the Department of Earth and Environmental Sciences.

SEARCHING FOR WARD'S



A brachiopod from the Ward collection and its original label.

Mount of a tarsier (owl monkey) from WNSE (Photo by Adam Fenster, University of Rochester)



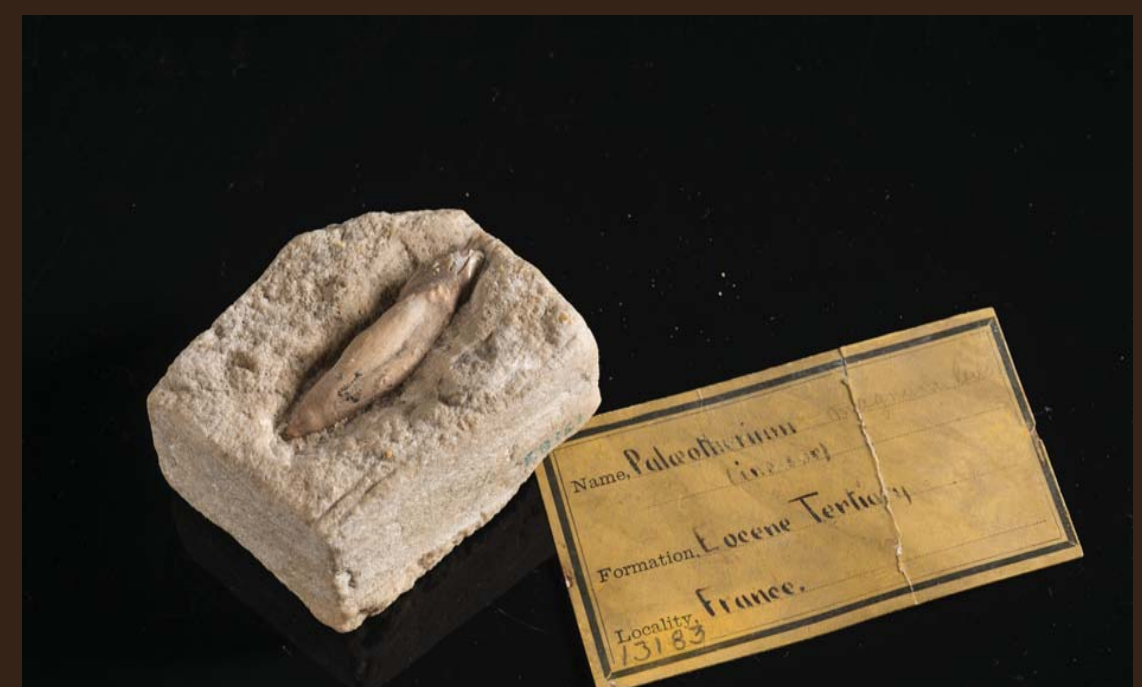
One of many cluttered drawers in the EES teaching collections



WNSE models of foraminifera (Photo by Adam Fenster, University of Rochester)



Original catalog of the Rochester Museum of Natural History



Tooth of Palaeotherium (Photo by Adam Fenster, University of Rochester)



The website: www.wardproject.org

3-D rendering of Sphenodon skull