

# National Seismic Data Repository: An investigation into a proposal

Nancy House(IGII-LLC), Chris Keane (AGI), Scott Sutherland, Paola Vera,  
Jim White (SEG);

GSA –Connects 09/22/2024

# Form Task Force to Prepare Business Plan for National Seismic Data Archives – CCS and Class I, II IV injectors, to identify risks.

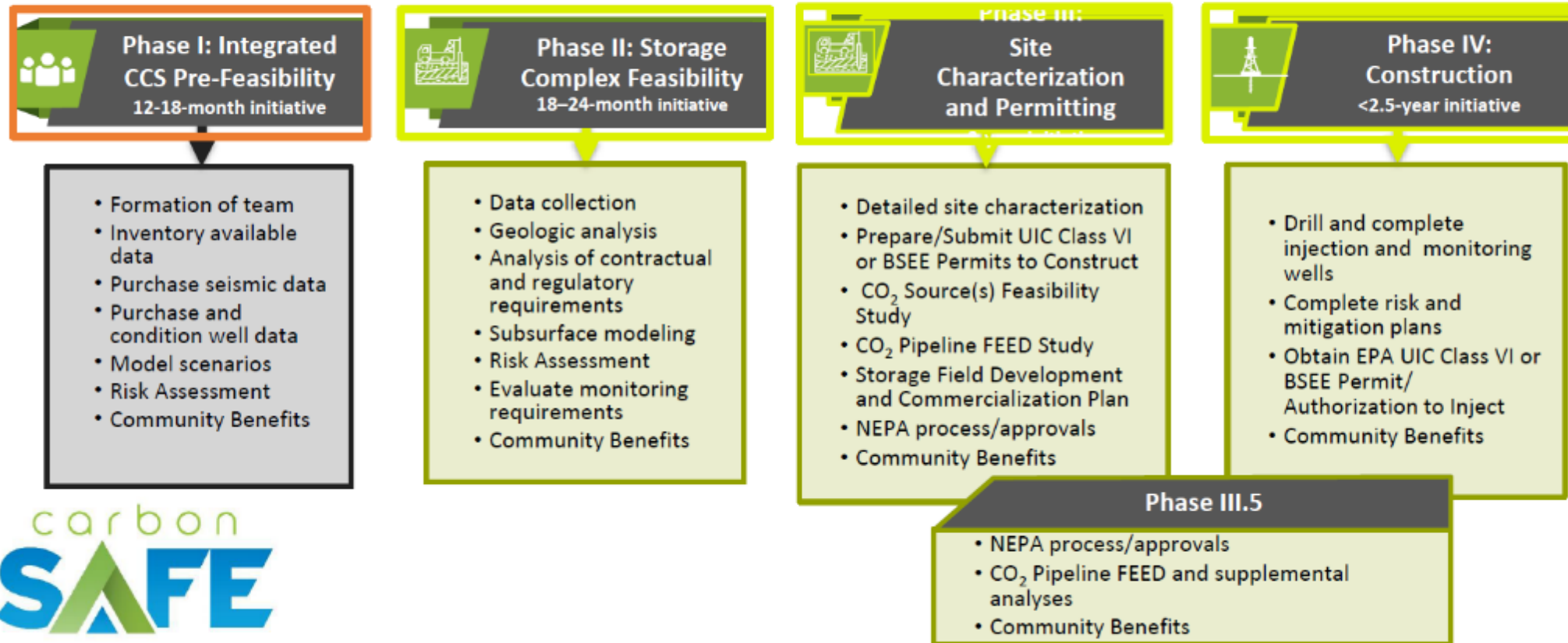
- Central Accurate index of (most) of the seismic data recorded over the past 100 years  
Location, - *Biggest Challenge* Acquisition parameters, processing sequence, and versions  
(Framework by 2<sup>nd</sup> Quarter 2025 )
  - Raw data
  - Title and version history
  - Original cost, processing history, and current value
  - REFORMAT old media before data disappears
- Accessible to all: academia, industry, regulators
  - Include academic research, and private, sources
- Establish a financial model that fairly compensates contributors
  - Pays for the upkeep of the archive and retrieval
  - Makes affordable for academics, small operators, regulators, and researchers.
- Implement a permanent archive retrieval system
  - Coordinate with vendors currently providing these services
  - Create standards across industry, research, academia

# Need for access to legacy data for CCS Planning

## Field Demonstration Projects



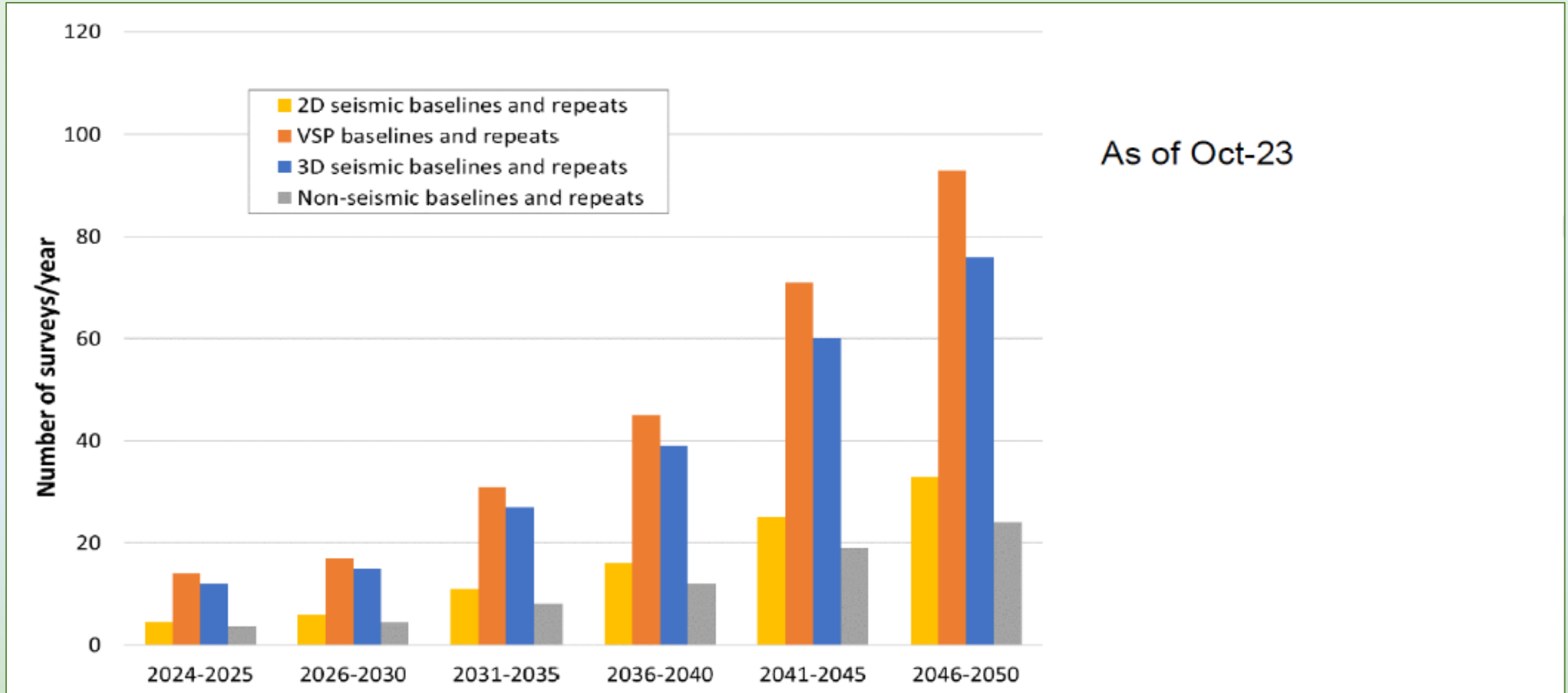
### Carbon Storage Assurance Facility Enterprise (CarbonSAFE)



Bipartisan Infrastructure Law (BIL): Storage, Validation and Testing (Section 40305): Carbon Storage Assurance Facility Enterprise (CarbonSAFE): Phases II, III, III.5, and IV 39



# Future Geophysics Use for CCS Monitoring



A Class VI Application-Based Assessment of the Future of Geophysics in US CCUS Projects, and DOE's Investments to Influence This; ( Presented at "Towards Gigatons CO2 Storage, Golden CO, July 14-19, 2024) David Alumbaugh, LBNL, Mark McCoy, NETL, P Jordan, J Corea, LBNL and B Petras Battelle



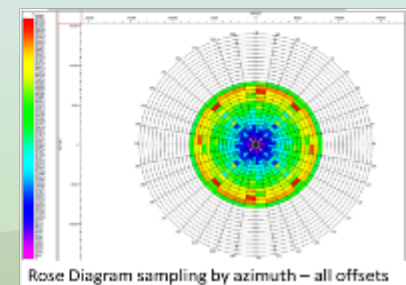
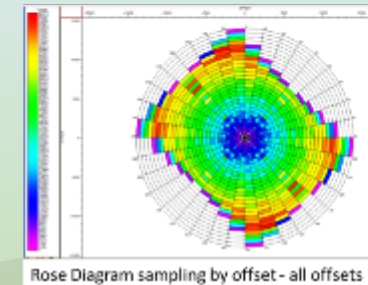
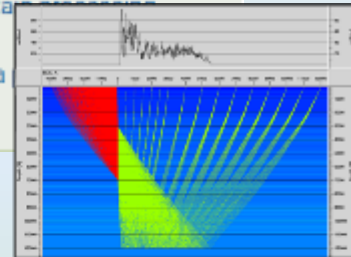
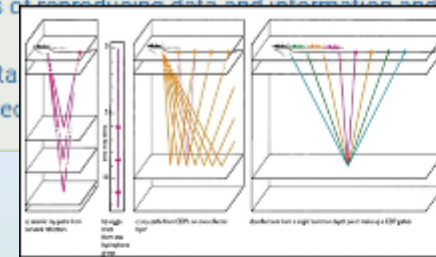
# How to locate and 'acquire' Seismic data for use in CCS or injector permitting

- Is there any data available?
  - Public domain? – DOE, National Archives, USGS?
  - Brokers - catalog and sell licenses to proprietary data that has been released.
  - Operators may release information about available data that they have acquired
  - Spec companies provide information of data they won that is available.
  - Check for public domain data through USGS reports????
- Design and acquire new data. Need to tie in information outside of specific objectives. *NO seismic is an island.*
  - Qualified seismic acquisition professionals: Objective targets, budget, restrictions
  - Underwrite a speculative survey
  - Join a group to share costs and benefits.

ENHANCED CONTENT - TABLE OF CONTENTS

▼ Part 551 Geological and Geophysical (G&G) Explorations of the Outer Continental Shelf 551.1 – 551.15

- § 551.1 Definitions.
- § 551.2 Purpose of this part.
- § 551.3 Authority and applicability of this part.
- § 551.4 Types of G&G activities that require permits or Notices.
- § 551.5 Applying for permits or filing Notices.
- § 551.6 Obligations and rights under a permit or a Notice.
- § 551.7 Test drilling activities under a permit.
- § 551.8 Inspection and reporting requirements for activities under a permit.
- § 551.9 Temporarily stopping, canceling, or relinquishing activities approved under a permit.
- § 551.10 Penalties and appeals.
- § 551.11 Submission, inspection, and selection of geological data and information collected under a permit and processed by permittees or third parties.
- § 551.12 Submission, inspection, and selection of geophysical data and information collected under a permit and processed by permittees or third parties.
- § 551.13 Reimbursement for the costs of reproducing data and information and certain other costs.
- § 551.14 Protecting and disclosing data.
- § 551.15 Authority for information collected.



# How is seismic data acquired, located, reprocessed, and used by industry?

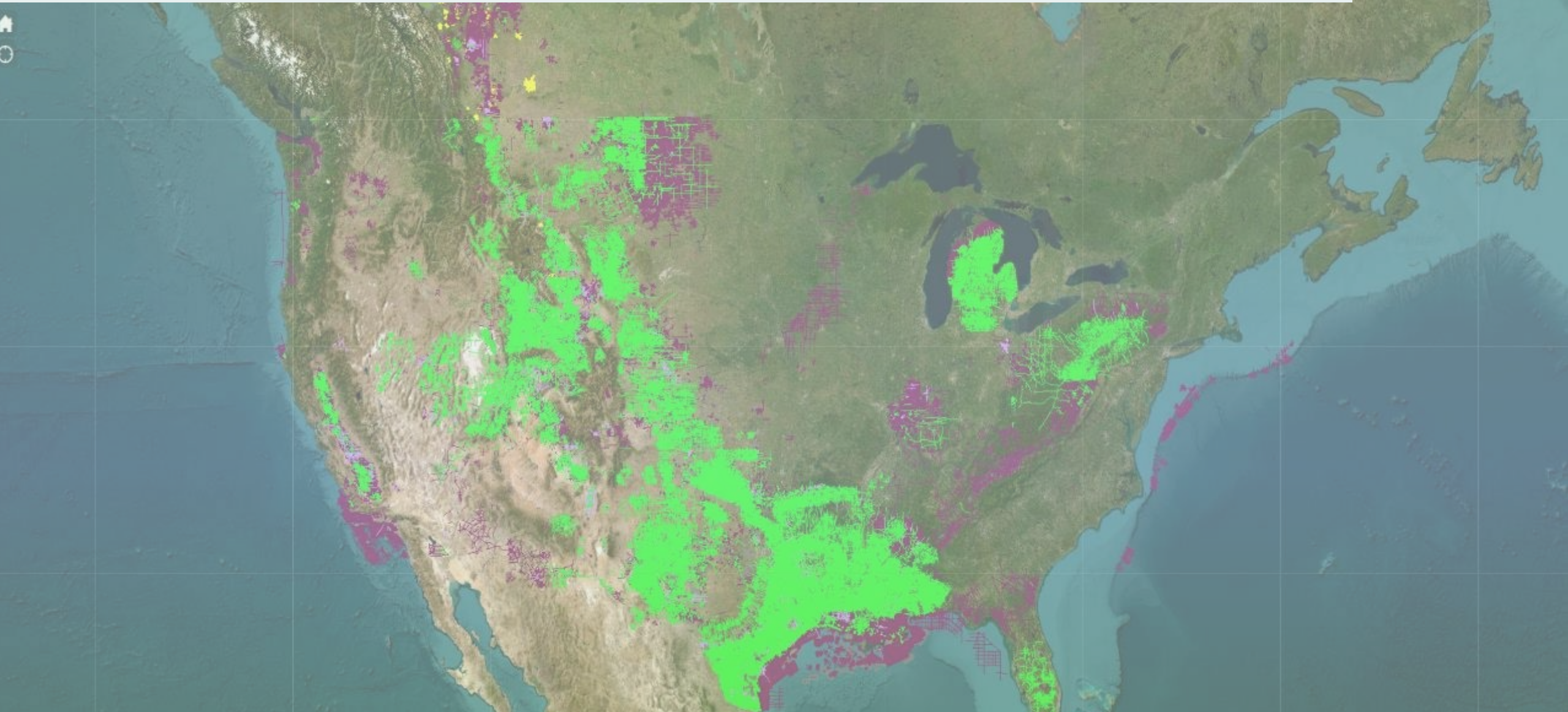
- Plan and execute a *seismic acquisition project*
  - Objective-based parameters, processing, and interpretation
- ‘Buy’ existing data
  - Rights to trade, sell, give, etc.
- License existing
  - Parameters determined by
  - Fine tune amount,
  - NO Selling, Trading, or giving to partners.
- Bootleg – STEAL
  - Don’t !!!!



# Large volumes of data have been collected but not accessible

- Legacy Industry data – salt mines, copies, old media
  - Bankruptcy
  - Mergers
  - Acquisitions
  - Copies of Spec or group data
- Public domain not cataloged- how is the public supposed to access
  - Data requests
    - Offshore MMS – BOEM data required
    - AK, Louisiana
- DOE-sponsored data
  - SEAM Models,
  - Teapot Dome -3D 1999
  - Carbon Safe – IBDP, Etc.

# One Company (SEI) Data Library



Over 1,650,000 2D miles and 108,000 sq. miles of 3D proprietary seismic data at your fingertips

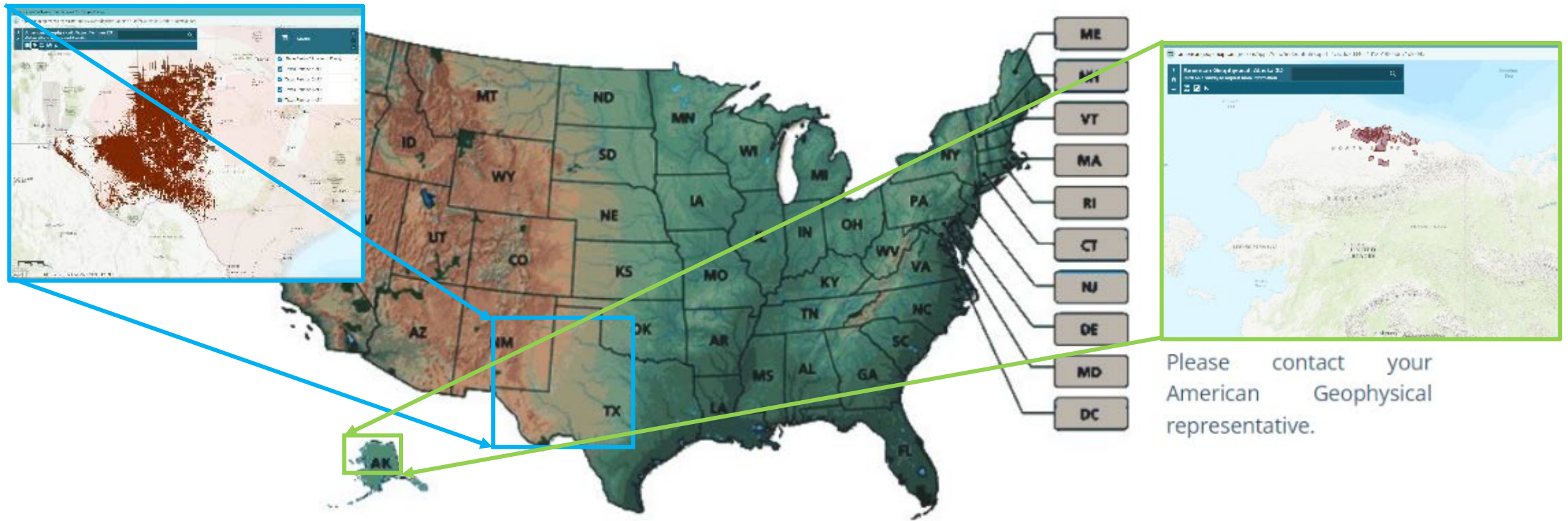


# American Geophysical Corporation –Data Library

2D Seismic Data

3D Seismic Data

<https://www.americangeophysical.com/maps.htm#>

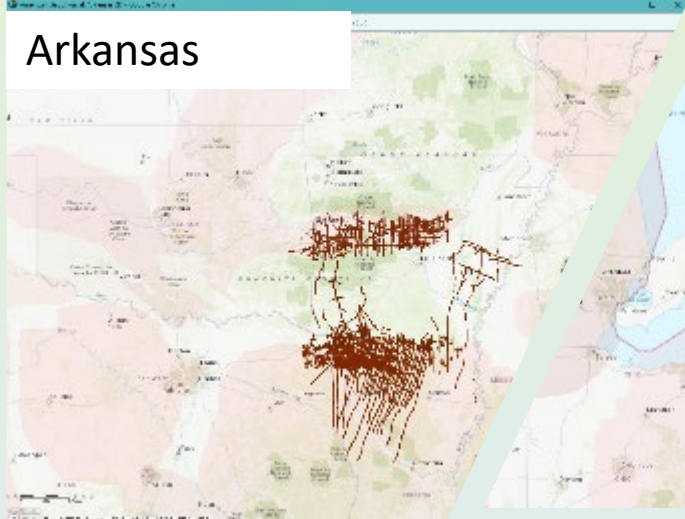


American Geophysical Corporation is a primary source for 3D and 2D seismic data locations throughout the U.S. onshore.

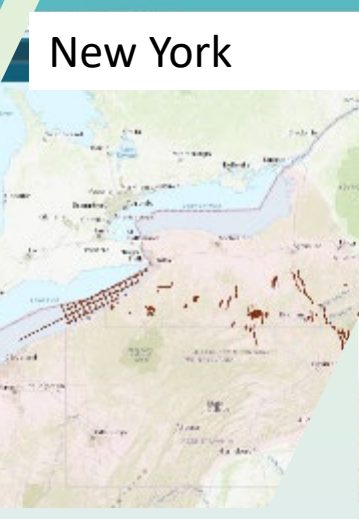
Xxx miles 2D data 34 states

XXX miles of 3D data in 22 states

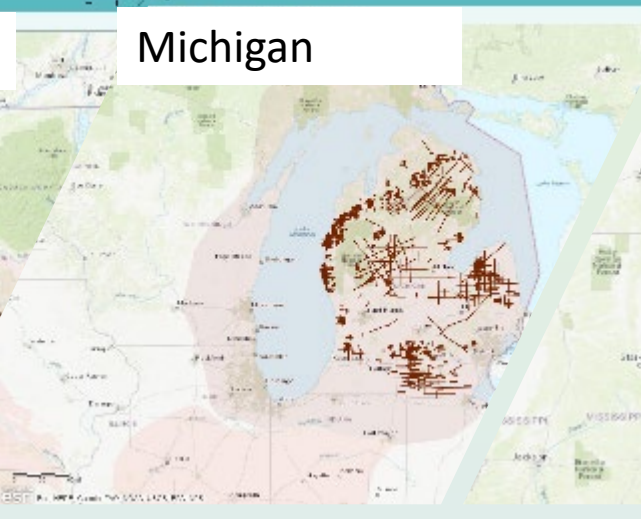
Arkansas



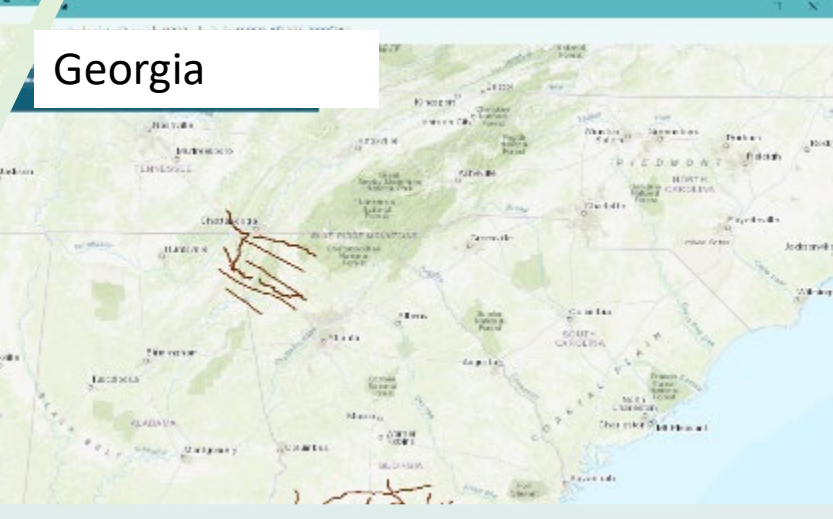
New York



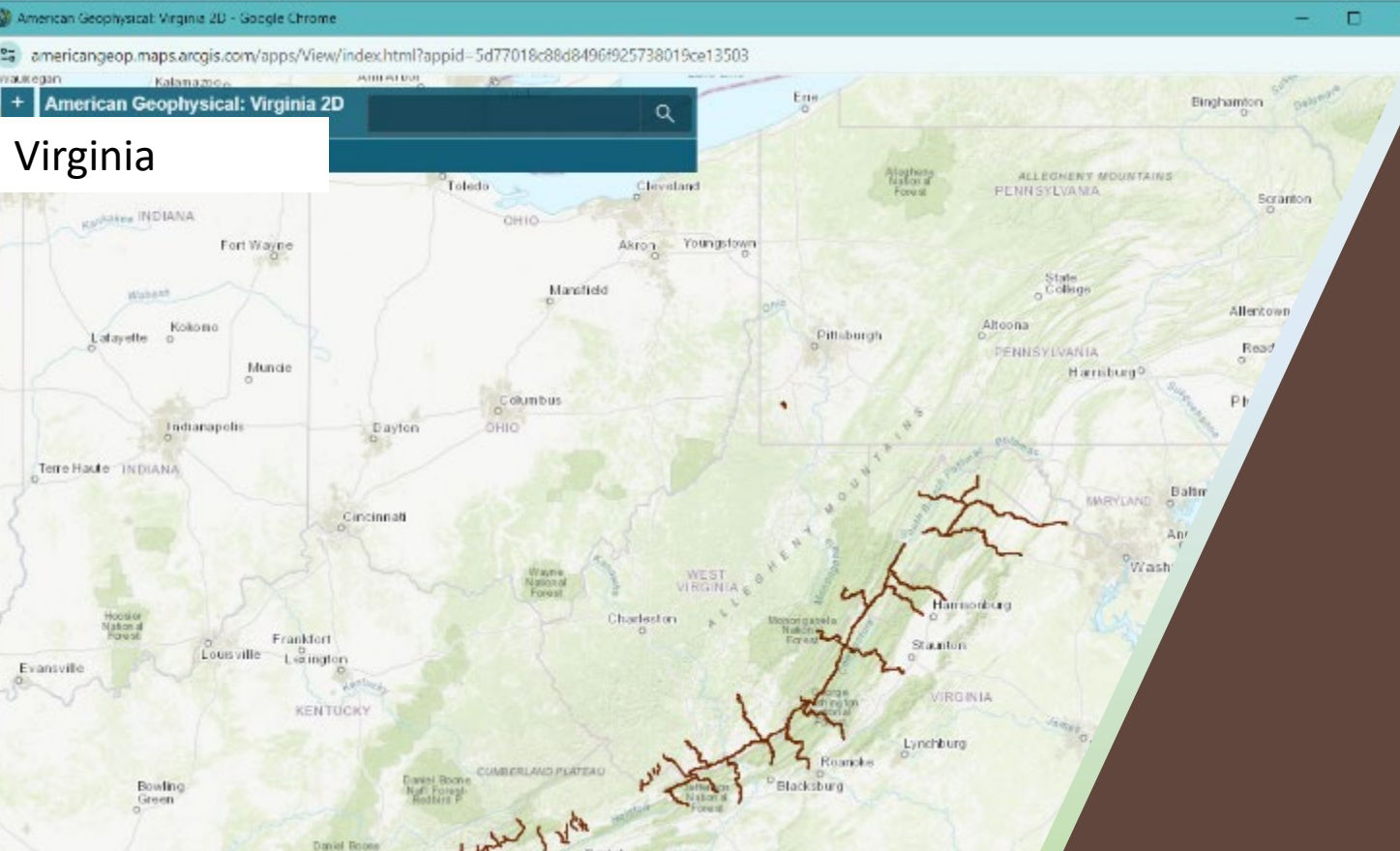
Michigan



Georgia



Virginia



American Geophysical Corporation Random state maps of 2D Seismic data

# How much data is there in industry archives?

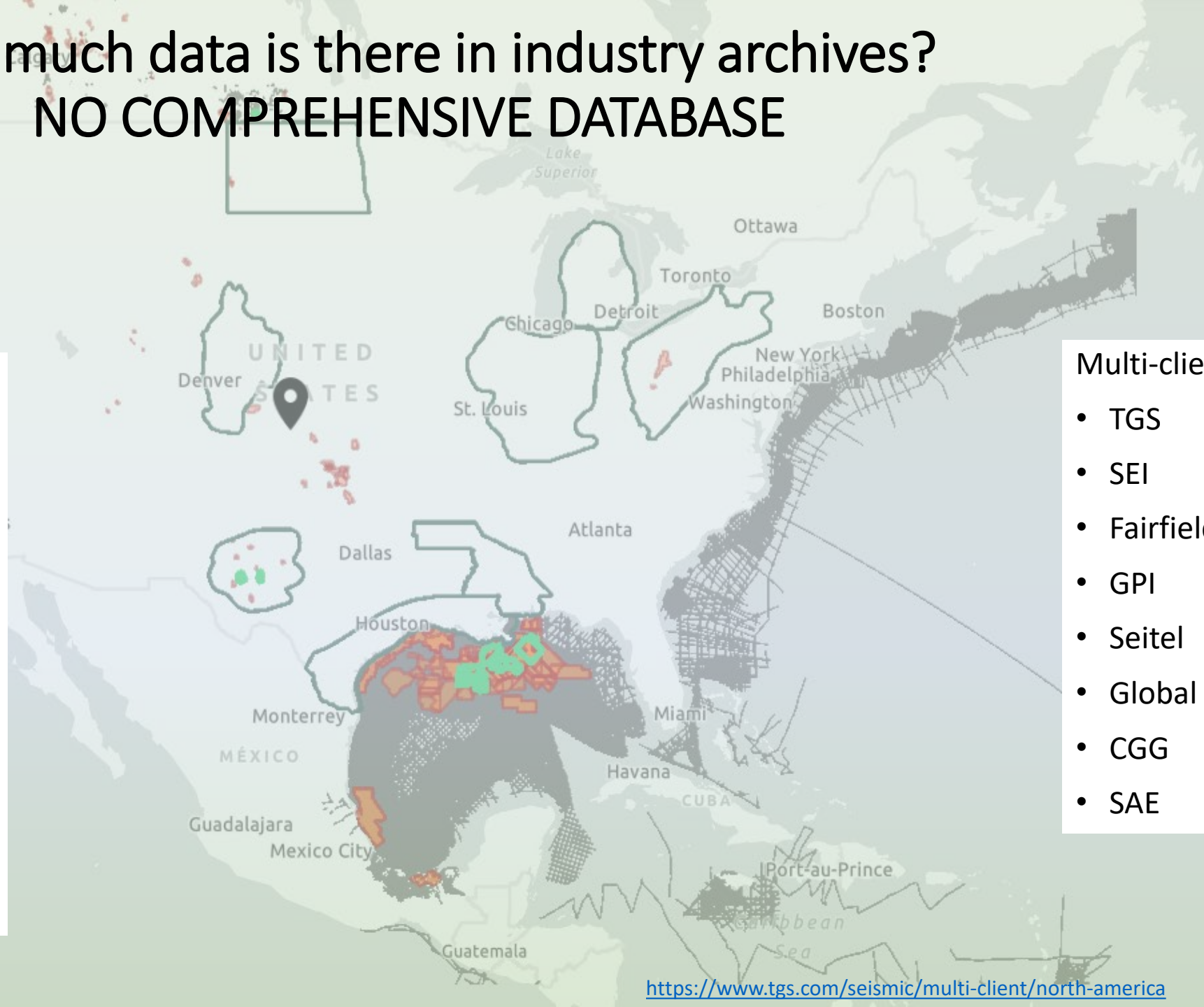
## NO COMPREHENSIVE DATABASE

Proprietary – Individual companies fully owned( released data marketed by seismic Data Brokers like AGC)

- Chevron
- XOM
- Conoco Phillips
- Chesapeake
- EGI
- EOG
- Pioneer
- Marathon
- Small Independent Oil and gas companies.

### Multi-client

- TGS
- SEI
- Fairfield
- GPI
- Seitel
- Global
- CGG
- SAE



# Updated estimate 3D offshore

The National Archive of Marine Seismic Surveys (NAMSS) holds the following :

**700 3D seismic surveys** covering 689,883 square kilometers.

**594 2D seismic surveys** with 34,102 tracklines covering 1,671,789 kilometers.

<https://walrus.wr.usgs.gov/NAMSS/>

## North America - Lower 48

All Companies proprietary	?????	
Multi-Client Company 1		18427
Multi-Client Company 2		5515
Multi-Client Company 3		8502
Multi-Client Company 4		11408
Multi-Client Company 5		10159
Multi-Client Company 6		1478
Multi-Client Company 7		1146
Multi-Client Company 8		29546
Multi-Client Company 9		48630
Multi-Client Company 10		39882
Multi-Client Company 11		3273
Multi-Client Company 12		7025
Total Multi-Client		184, 991

\*There has been consolidation in multi-client data libraries. This list is not intended to represent the number of multi-client companies currently in operation. ( S Sutherland research)



# Historical Data amounts – NGDRS

## National Research Council – 1995 Report Value of data preservation.

### NATIONAL GEOSCIENCE DATA REPOSITORY SYSTEM(NGDRS) PHASE III:11/2002-3/2003 IMPLEMENTATION AND OPERATION OF THE REPOSITORY. 6.5:1 ROI

- Large Scale Transfers of Seismic data; delayed due to the vast scale of seismic data relative to funding availability.
- GeoTrek – Linux and MySQL open-source database.
- Update MapServer & Map Script Language
- Evaluating the viability of transferring seismic from the western shelf of Florida.
- 85 % Cores, 12 million linear feet. Available for public use.

### National Geosciences Data Repository System Phase III: Implementation and Operation of the Repository Final Report: 10/2003

- 

<https://www.osti.gov/search/semantic:NGDRS>



# Code of Federal Regulations – National Archives

- eCFR :: 30 CFR Part 551 -- Geological and Geophysical (G&G) Explorations of the Outer Continental Shelf
  - Section 551.1 Definitions: **Geophysical data** :tools means “measurements that have not been processed or interpreted.”

- Section 555.12 – describes submission of data to the BOEM <https://www.ecfr.gov/current/title-30/section-551.12>

§ 551.12 Submission, inspection, and selection of geophysical data and information collected under a permit and processed by permittees or third parties.

- Section 555.14 – protection and disclosure of data – <https://www.ecfr.gov/current/title-30/section-551.14>

§ 551.14 Protecting and disclosing data and information submitted to BOEM under a permit.

- (b) Timetable for release of G&G data and information related to oil, gas, and sulphur that BOEM acquires. Except for high-resolution data and information released under 30 CFR 550.197(b)(2), BOEM will release or disclose acquired data and information in accordance with paragraphs (b)(1) through (7) of this section.
- (d) Sharing data and information with coastal States.

V / Subchapter B / Part 551 Previous / Next / Top

commercial geological or geophysical exploration or research.

**Geological exploration** means exploration that uses geological and geophysical techniques (e.g., coring and test drilling, well logging, and bottom sampling) to produce data and information on oil, gas, and sulphur resources in support of possible exploration and development activities. The term does not include geological scientific research.

**Geological information** means geological or geochemical data that have been analyzed, processed, or interpreted.

**Geophysical data** ENHANCED CONTENT - PARAGRAPH TOOLS

**Geophysical exploration** means exploration that uses geophysical techniques (e.g., magnetic, electric, seismic, or gravity) to produce data and information on oil, gas, and sulphur resources in support of possible exploration and development activities. The term does not include geophysical scientific research.

**Geophysical information** means geophysical data that have been processed or interpreted.

**Geophysical information** ENHANCED CONTENT - PARAGRAPH TOOLS

**Governor** means the Governor of a State or the District of Columbia.

**Human environment** means the natural and man-made environment, including the air, water, and land, which interactively determine the state, condition, and quality of living conditions, employment, and health of those affected, directly or indirectly, by activities occurring on the OCS.

**URL:** [https://www.ecfr.gov/current/title-30/part-551#p-551.1\(Geophysical%20data\)](https://www.ecfr.gov/current/title-30/part-551#p-551.1(Geophysical%20data))

**Citation:** 30 CFR 551.1 "Geophysical data"

**URL:** [https://www.ecfr.gov/current/title-30/part-551#p-551.1\(Geophysical%20information\)](https://www.ecfr.gov/current/title-30/part-551#p-551.1(Geophysical%20information))

**Citation:** 30 CFR 551.1 "Geophysical information"

**Authority:** Section 104, Public Law 97-451, 96 Stat. 2451 (30 U.S.C. 1714), Public Law 109-432, Div C, Title 30, U.S.C.

ENHANCED CONTENT - TABLE OF CONTENTS

▼ **Part 551 Geological and Geophysical (G&G) Explorations of the Outer Continental Shelf** 551.1 – 551.15

- § 551.1 Definitions.
- § 551.2 Purpose of this part.
- § 551.3 Authority and applicability of this part.
- § 551.4 Types of G&G activities that require permits or Notices.
- § 551.5 Applying for permits or filing Notices.
- § 551.6 Obligations and rights under a permit or a Notice.
- § 551.7 Test drilling activities under a permit.
- § 551.8 Inspection and reporting requirements for activities under a permit.
- § 551.9 Temporarily stopping, canceling, or relinquishing activities approved under a permit.
- § 551.10 Penalties and appeals.
- § 551.11 Submission, inspection, and selection of geological data and information collected under a permit and processed by permittees or third parties.
- § 551.12 Submission, inspection, and selection of geophysical data and information collected under a permit and processed by permittees or third parties.
- § 551.13 Reimbursement for the costs of reproducing data and information and certain processing costs.
- § 551.14 Protecting and disclosing data and information submitted to BOEM under a permit.
- § 551.15 Authority for information collection.

# DOE-sponsored data in Public Domain

Most (all?) DOE sponsored projects require placing data in public domain.

- **Teapot Dome 3D 1999** – 3D Land data set to be used to refine processing and interpretation projects Included most seismic interpretation software packages
- **Illinois Basing Decatur Project (IBDP):** CCUS Pilot project with ADM to study CCS in the Illinois basin.
- **SEG SEAM Life of Field –SEG Advanced Modeling Corporation**
  - Dynamic model of Gas oil Water field with 4D Seismic simulation
- **Other DOE-sponsored projects?**

How easy is it to locate and get that data? Is there a central updated database?

# Past efforts to establish database

- State/ entities that collect data after periods of exclusivity
  - Alaska
  - Louisiana
  - ?????
- OEM ( formerly MMS) – Offshore Seismic

Where is this data? Can it be easily located and “acquired”?



# Economic Model for data owners to put data into the public domain

- What, Where When – Data catalogue accessible to all
  - PPDM standards in maintaining data integrity and support functions.
  - DOE funded research,
  - Academic research data
  - SEG research files, program data GWB, etc.
- Receive credits proportional to data value input - equivalent to Fair market value
  - Cash
  - Credits for other data in the pool
  - Proof of ownership
- Agency, industry ?– Validates Ownership
  - Maintains database for credits or compensation
  - Coordinate's location and reproduction with various data owners or vendors.
  - Follow up on data deliveries.
- Training and employment in validating data integrity

# Current Proposal: Form Task Force to prepare a Business plan by 2<sup>nd</sup> quarter of 2025

Incentives to contribute data to the public domain

Reflects value, but is accessible to academia,

Coop for CCUS areas of review with multiple injectors

Proper complete archive of raw data and processing history

Trained workforce required

Cost to maintain and retrieve

Affordability and accessibility for CCUS, Geothermal, Induced Seismicity

Compensation needed to support storage, retrieval, and reproduction

Cost reduced by Co-oping the expense.

Subsidies – for training and maintenance

# Acknowledgements

Many thanks to all who supported my quest for seismic data for the past 40 years in industry. Additionally, the following have provided additional information

- Linda Bragg – PPDM “ What is seismic” project to standardize data model for archiving
- Jim Howell: Ovation Data services BOEM
- Lynne Griffin and Cathy Wittrock American Geophysical Corporation