

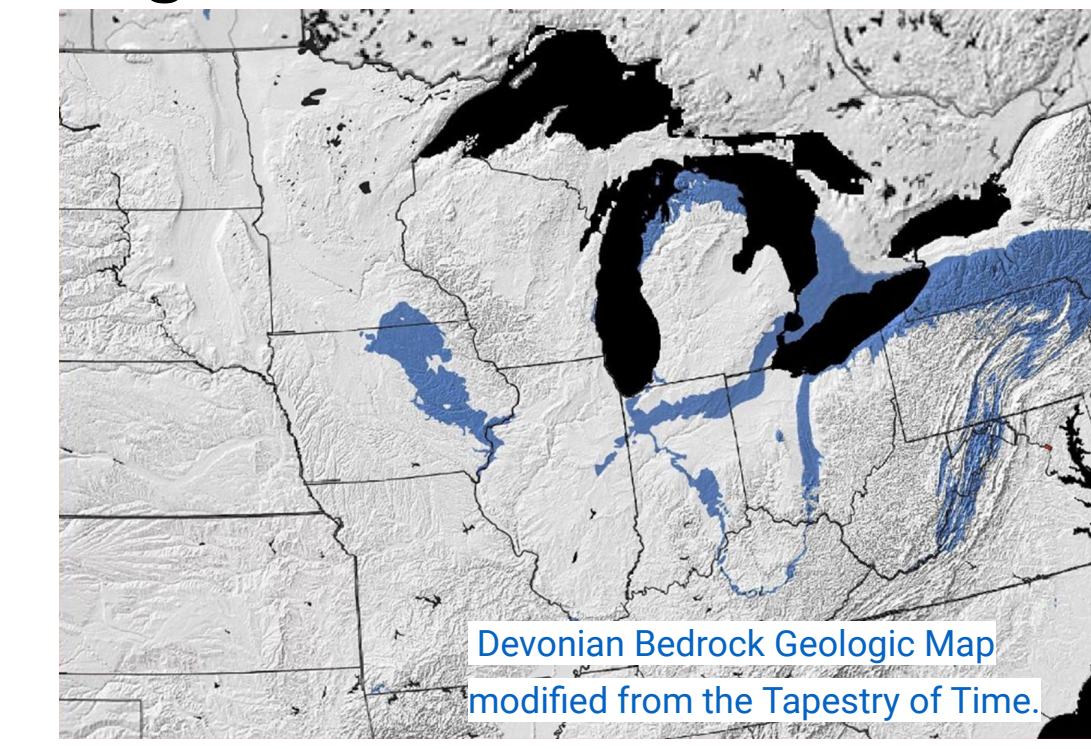
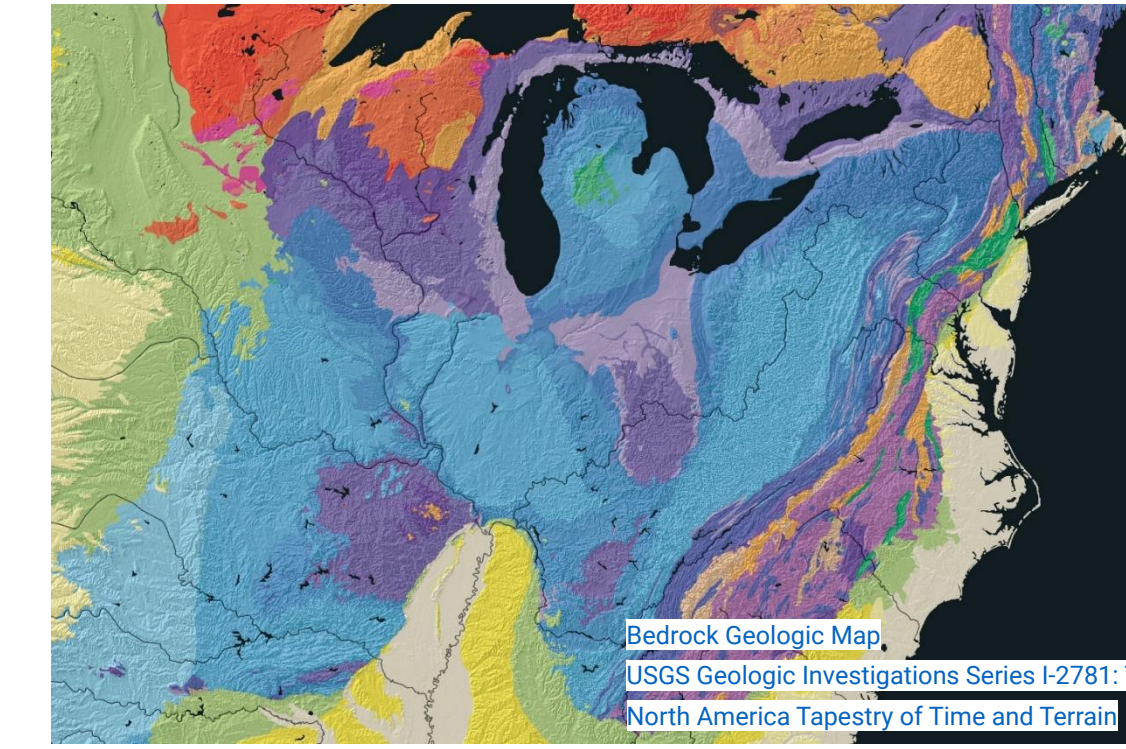
Devonian IMLS Digitization Project at The Field Museum and Milwaukee Public Museum



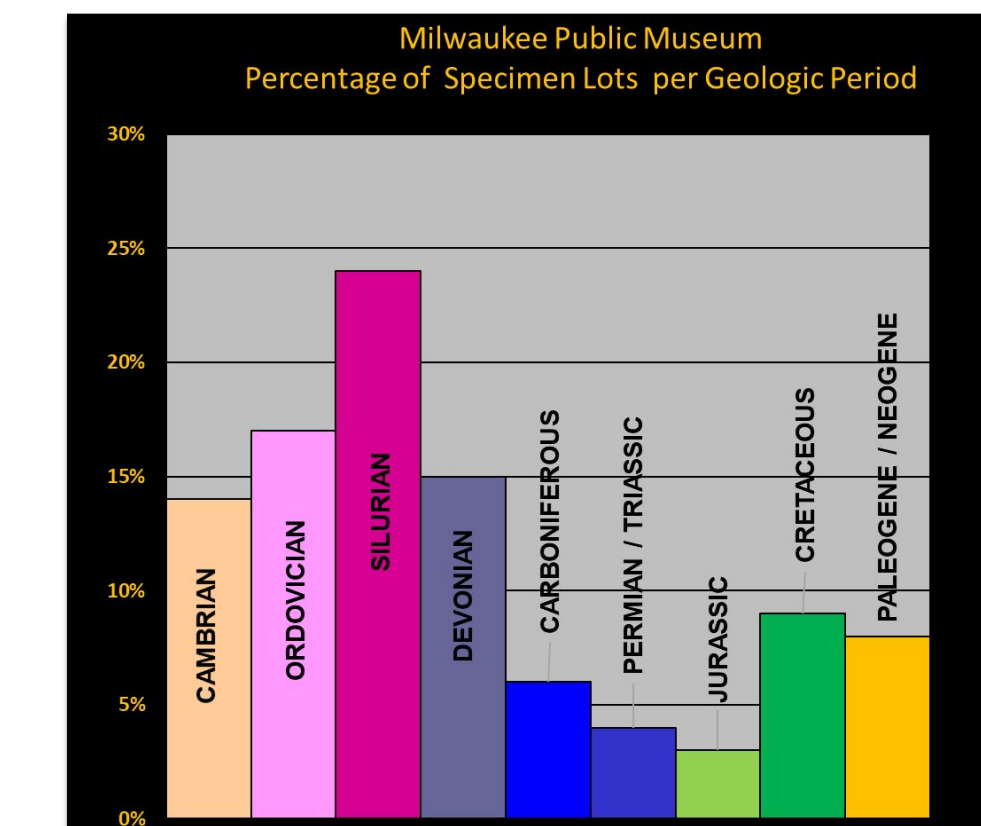
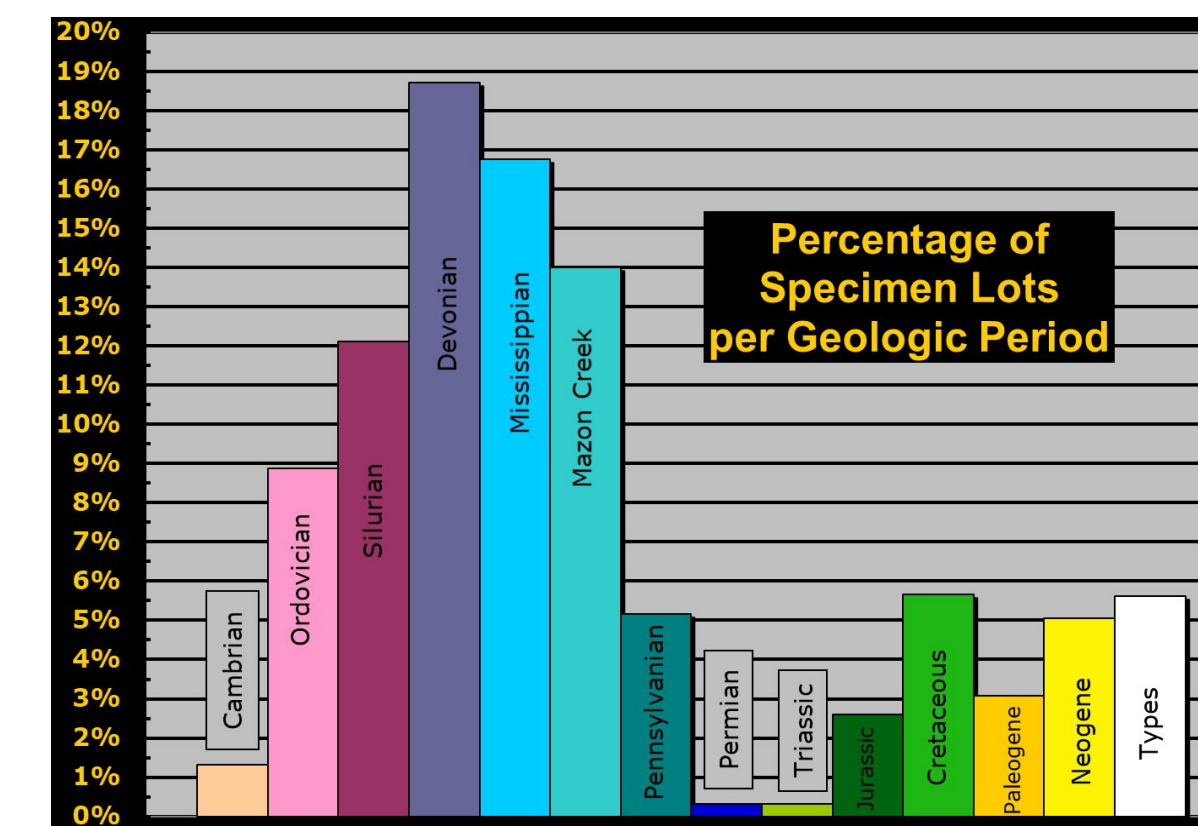
The Field Museum Fossil Invertebrate Collection

The Milwaukee Public Museum Fossil Invertebrate Collection

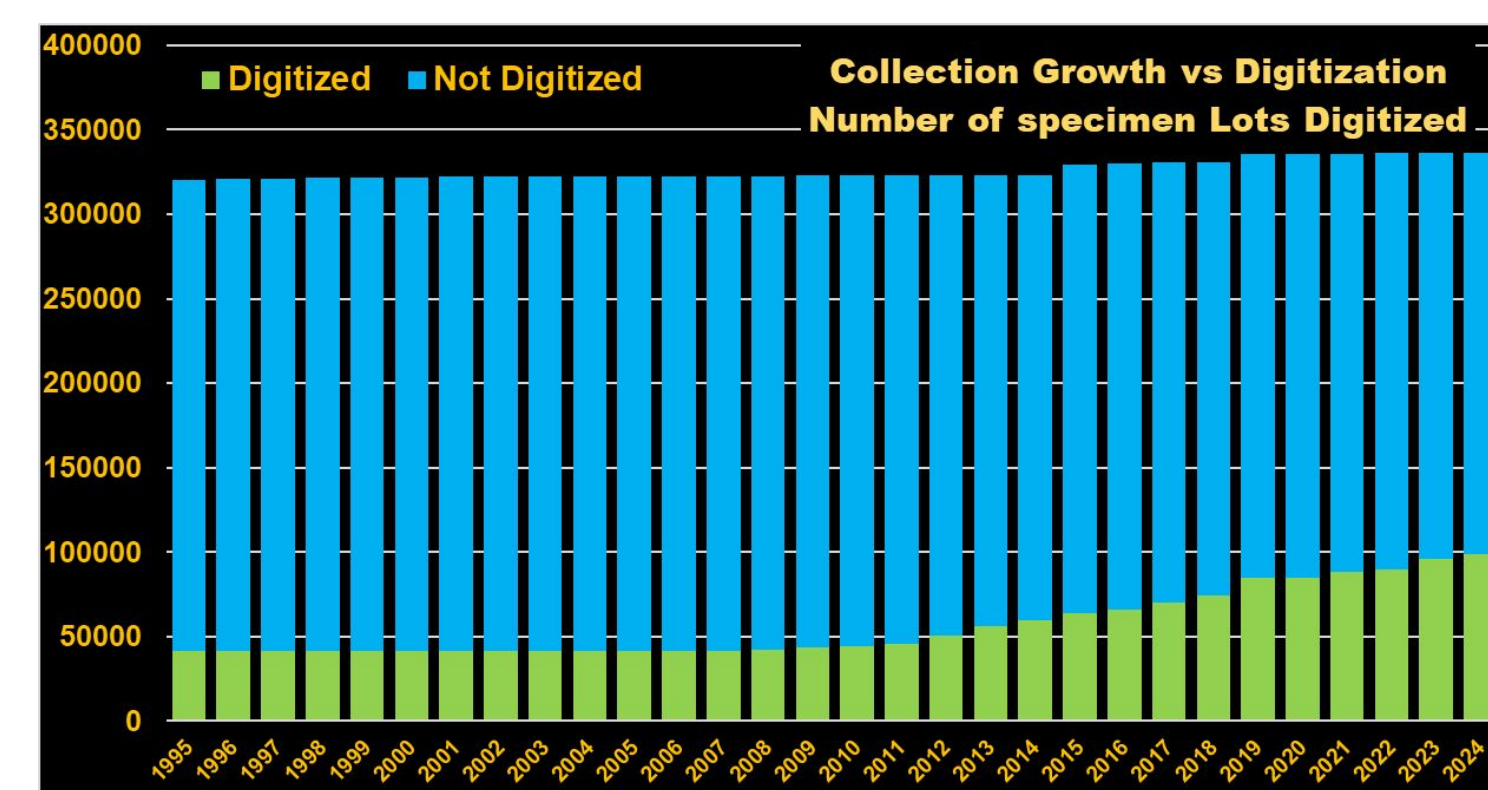
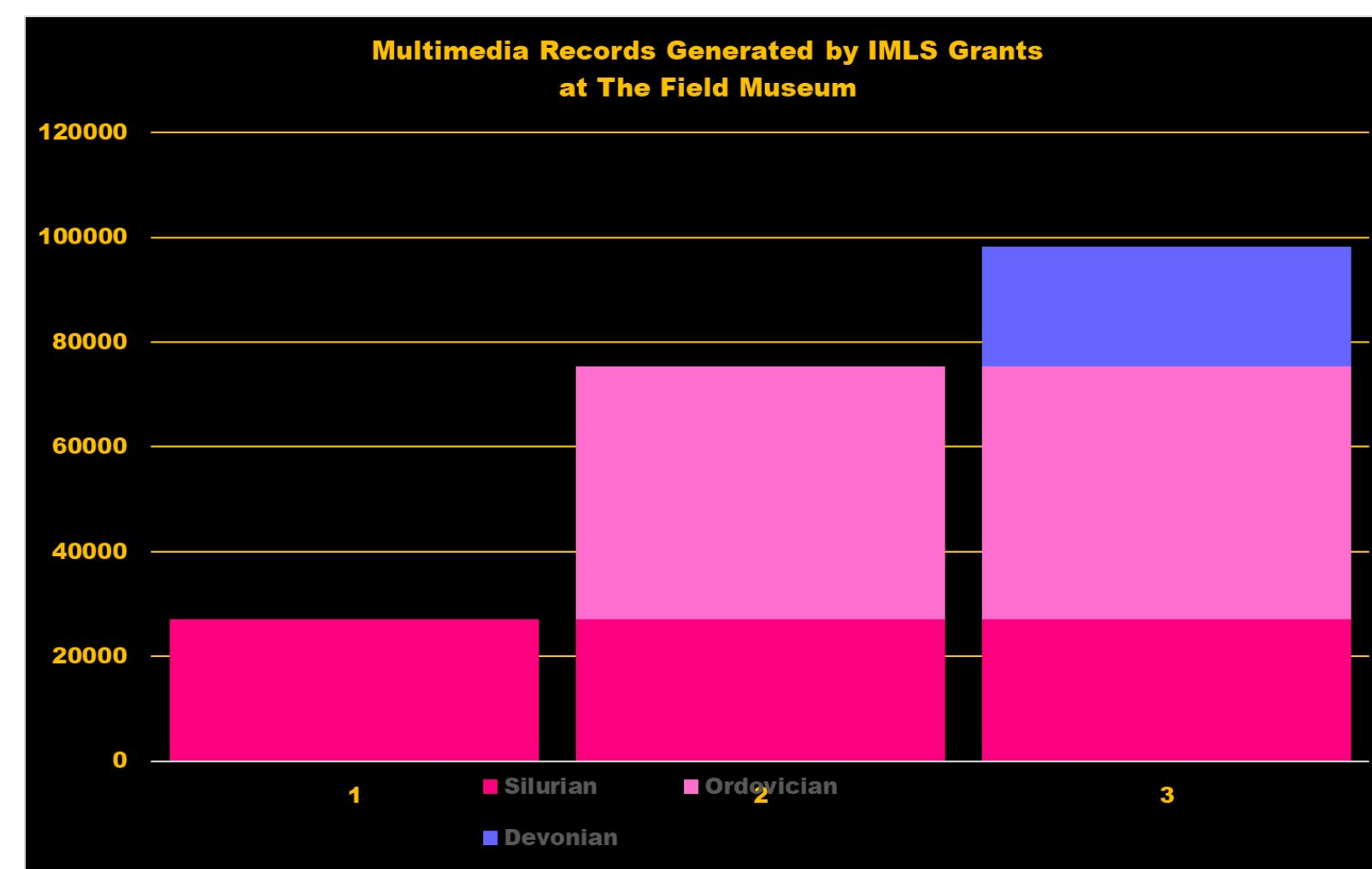
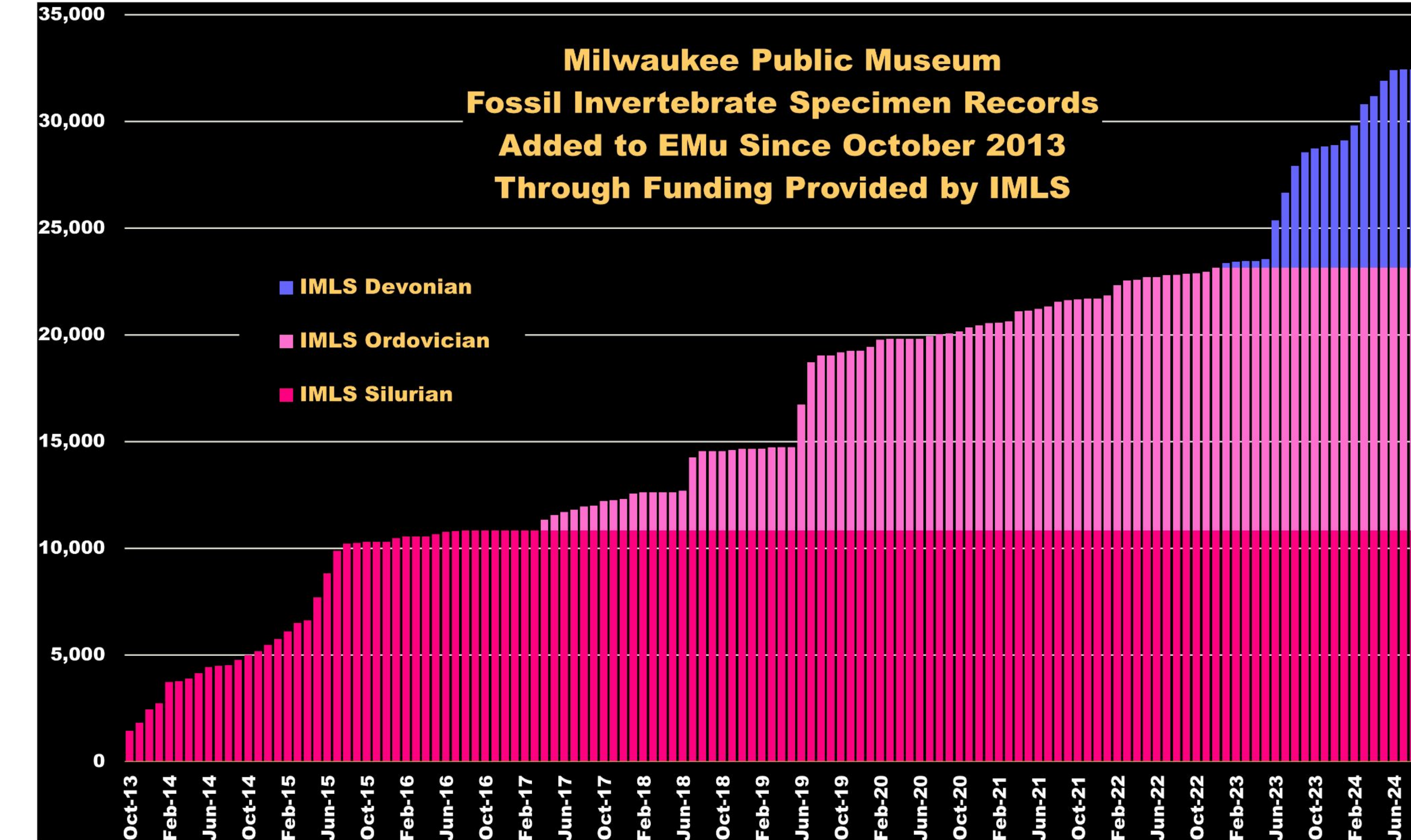
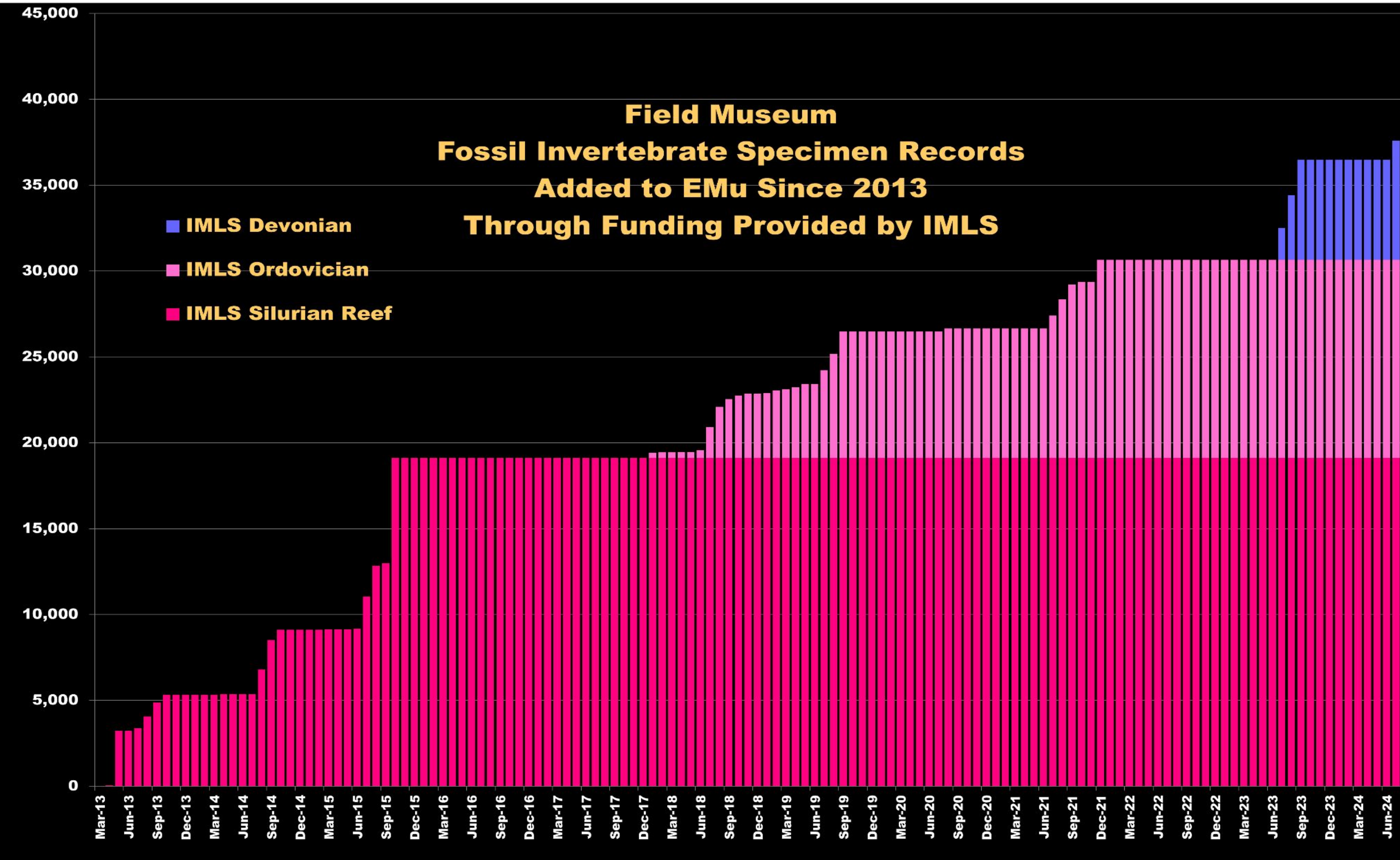
Collection Background



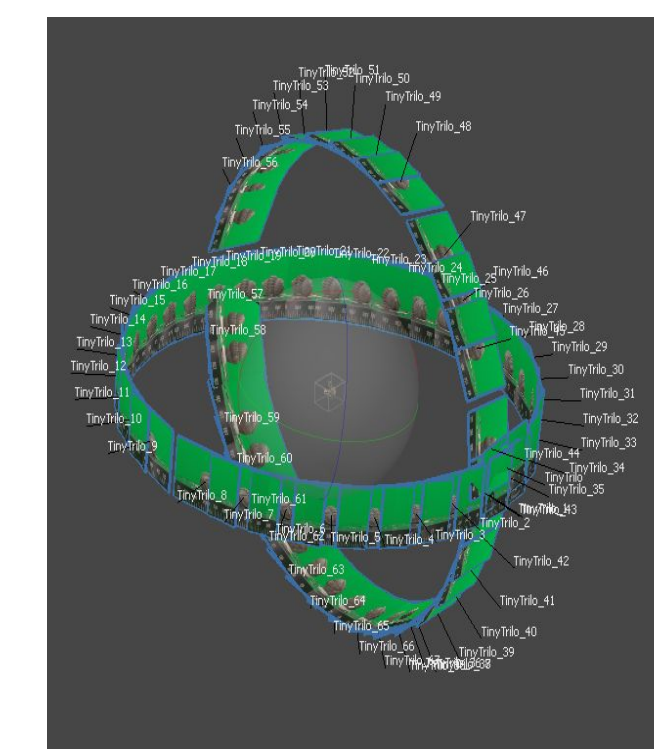
Collections at the FMNH and MPM are primarily from the Paleozoic of the Midwest and Great Lakes Region.



Collections at the FMNH are focused on the upper Paleozoic while the MPM collections are focused on the lower Paleozoic.



Digitization efforts at the Field Museum showing specimen lot additions to the collection with number of lots digitized per year.



Agisoft Metashape
Align Photos + Sparse Cloud

