

Aggregate Resource Inventory of Kitsap County, Washington

Amy Rudko and Alexander N. Steely

April 2023

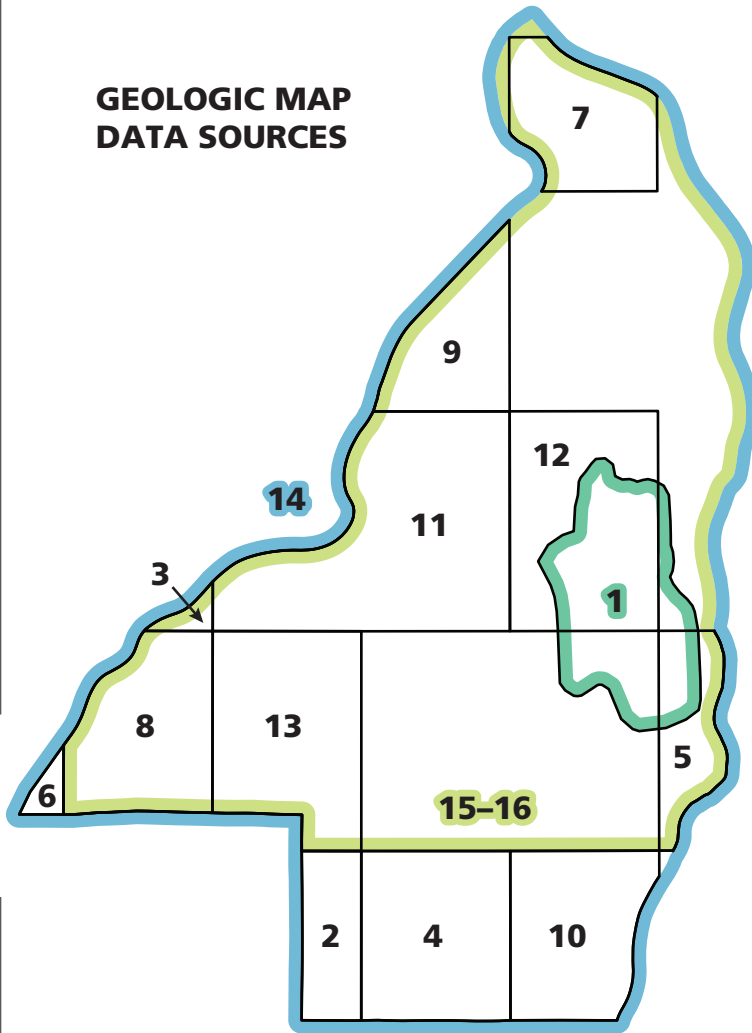


Some of the resource areas were mapped at 1:24,000 scale, which is more detailed than the scale shown on this plate. For a more detailed view of the data please visit the Washington Geological Survey Geologic Information Portal: geologyportal.dnr.wa.gov

WASHINGTON GEOLOGICAL SURVEY
MAP SERIES 2023-01
Aggregate Resource Inventory of Kitsap County, Washington

©2023 Washington Geological Survey
www.dnr.wa.gov/geology

GEOLOGIC MAP DATA SOURCES

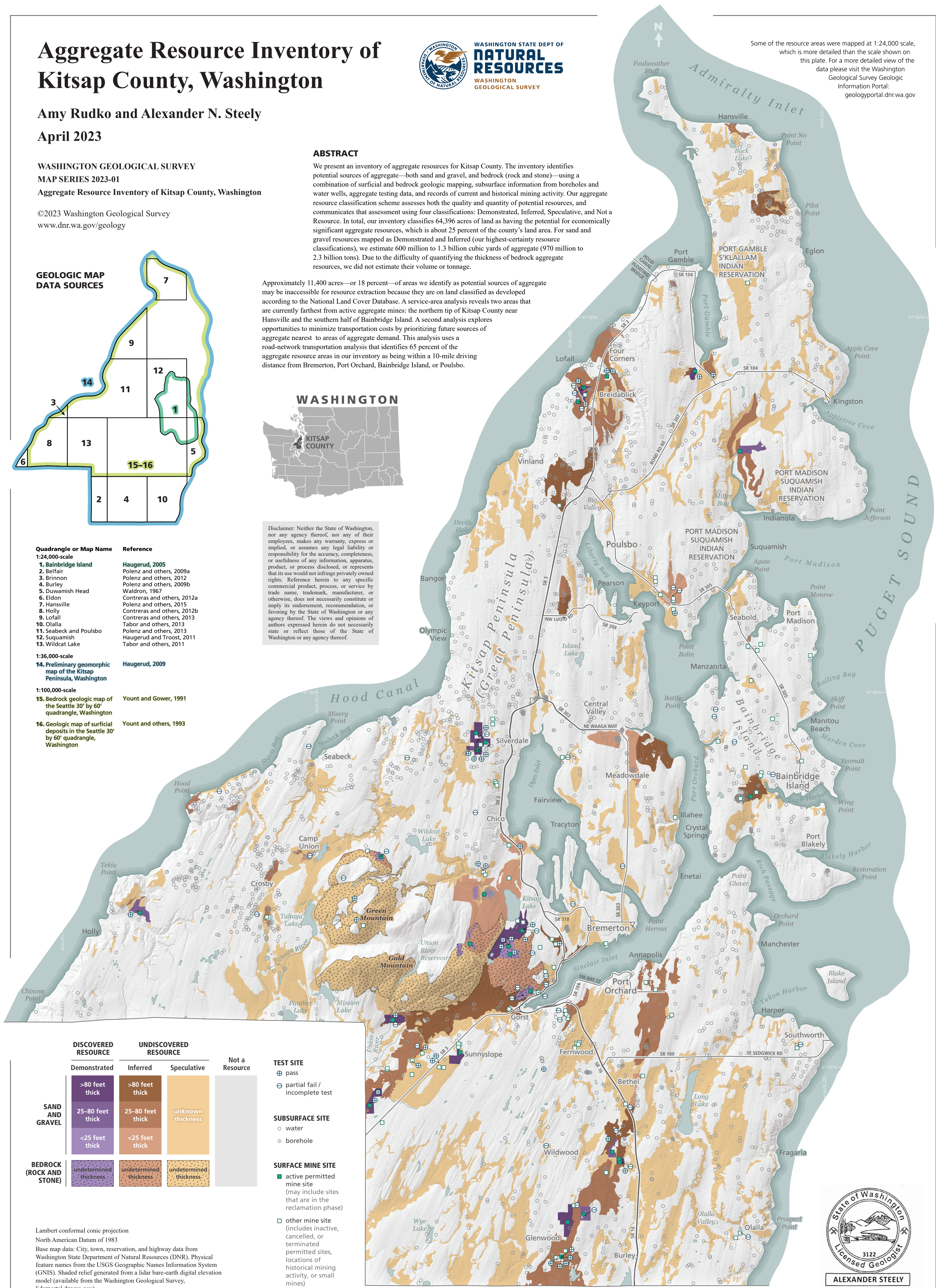


Approximately 11,400 acres—or 18 percent—of areas we identify as potential sources of aggregate may be inaccessible for resource extraction because they are on land classified as developed according to the National Land Cover Database. A service-area analysis reveals two areas that are currently farthest from active aggregate mines: the northern tip of Kitsap County near Hansville and the southern half of Bainbridge Island. A second analysis explores opportunities to minimize transportation costs by prioritizing future sources of aggregate nearest to areas of aggregate demand. This analysis uses a road-network transportation analysis that identifies 65 percent of the aggregate resource areas in our inventory as being within a 10-mile driving distance from Bremerton, Port Orchard, Bainbridge Island, or Poulsbo.



Disclaimer: Neither the State of Washington, nor any agency thereof, nor any of their employees, makes any warranty, express or implied, or assumes any legal liability or responsibility for the accuracy, completeness, or usefulness of any information, apparatus, product, or process disclosed, or represents that its use would not infringe privately owned rights. Reference herein to any specific commercial product, process, or service by trade name, trademark, manufacturer, or otherwise, does not necessarily constitute or imply its endorsement, recommendation, or favoring by the State of Washington or any agency thereof. The views and opinions of authors expressed herein do not necessarily state or reflect those of the State of Washington or any agency thereof.

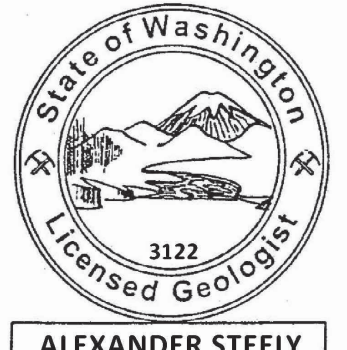
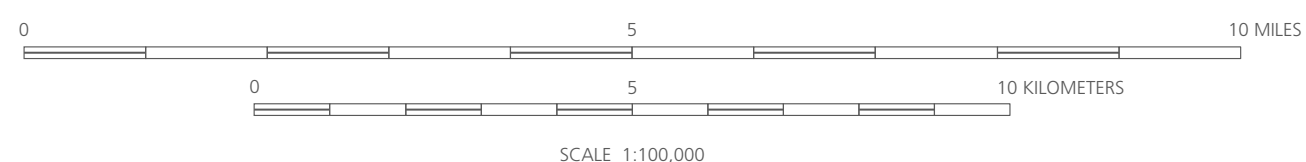
Quadrangle or Map Name	Reference
1:24,000-scale	
1. Bainbridge Island	Haugerud, 2005
2. Belfair	Polenz and others, 2009a
3. Brinnon	Polenz and others, 2012
4. Burley	Polenz and others, 2009b
5. Duwamish Head	Walton, 1967
6. Eldon	Contreras and others, 2012a
7. Hansville	Polenz and others, 2015
8. Holly	Contreras and others, 2012b
9. Lofall	Contreras and others, 2013
10. Olalla	Tabor and others, 2013
11. Seabeck and Poulsbo	Polenz and others, 2013
12. Suquamish	Haugerud and Troost, 2011
13. Wildcat Lake	Tabor and others, 2011
1:36,000-scale	
14. Preliminary geomorphic map of the Kitsap Peninsula, Washington	Haugerud, 2009
1:100,000-scale	
15. Bedrock geologic map of the Seattle 30' by 60' quadrangle, Washington	Yount and Gower, 1991
16. Geologic map of surficial deposits in the Seattle 30' by 60' quadrangle, Washington	Yount and others, 1993



	DISCOVERED RESOURCE			UNDISCOVERED RESOURCE			Not a Resource
	Demonstrated	Inferred	Speculative	Demonstrated	Inferred	Speculative	
SAND AND GRAVEL	>80 feet thick	>80 feet thick	>80 feet thick	>80 feet thick	>80 feet thick	>80 feet thick	
	25–80 feet thick	25–80 feet thick	25–80 feet thick	25–80 feet thick	25–80 feet thick	unknown thickness	
	<25 feet thick	<25 feet thick	<25 feet thick	<25 feet thick	<25 feet thick	unknown thickness	
BEDROCK (ROCK AND STONE)	undetermined thickness	undetermined thickness	undetermined thickness	undetermined thickness	undetermined thickness	undetermined thickness	
	undetermined thickness	undetermined thickness	undetermined thickness	undetermined thickness	undetermined thickness	undetermined thickness	
	undetermined thickness	undetermined thickness	undetermined thickness	undetermined thickness	undetermined thickness	undetermined thickness	

- TEST SITE**
- ⊕ pass
 - ⊖ partial fail / incomplete test
- SUBSURFACE SITE**
- water
 - borehole
- SURFACE MINE SITE**
- active permitted mine site (may include sites that are in the reclamation phase)
 - other mine site (includes inactive, cancelled, or terminated permitted sites, locations of historical mining activity, or small mines)

Lambert conformal conic projection
North American Datum of 1983
Base map data: City, town, reservation, and highway data from Washington State Department of Natural Resources (DNR). Physical feature names from the USGS Geographic Names Information System (GNIS). Shaded relief generated from a lidar bare-earth digital elevation model (available from the Washington Geological Survey, lidarportal.dnr.wa.gov)
GIS by Amy Rudko
Cartography by Daniel E. Coe
Editing and production by Nikolas Midtun and Susan R. Schnur



ALEXANDER STEELY
Apr 2023